

CONTINUOUS ROOM DISINFECTION

GERMBUSTER Air Cleaner

COMMERCIAL GRADE HEPA



Scrubs Air Quieter at **1/2** the Cost of Competing Products. Available in **TWO** Models.

The GERMBUSTER line of commercial-grade air cleaners is built with the same quality and durability as a HEPACART®. Rugged, easy to operate, and low maintenance, GERMBUSTER units are highly effective at continuously reducing viral load in the environment.



Two Models

GERMBUSTER 300

Continuous air cleansing via commercial grade air filtration for everyday use in high-traffic areas.

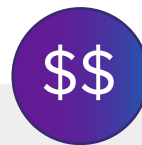
GERMBUSTER FAR-UV

Continuous air cleansing via commercial-grade air filtration and FAR-UV disinfection for the most critical air-quality environments.



Many Applications

- Hospital suites
- Waiting areas
- Dentist offices
- Conference rooms
- Common areas
- Laboratories
- Classrooms
- Nurses Offices
- Assisted Living
- Apartments
- Residential
- Casinos VIP Rooms



Energy Savings

Both models feature an energy-efficient, high-performance fan featuring an ECM (Electronically Commutated Motor) requires up to 88% LESS energy.

Result:
Lower cost of use

**GERMBUSTER
looks great
in any
environment**



Germbuster Commercial Air Purifier

Consumables



HEPA FILTERS

Round, aluminum framed
99.97% HEPA filter.

PART #: FUV-GB.HF

GERMBUSTER 300 GERMBUSTER FAR UV

Working Dimensions:
16" L × 16" W × 25" H

Variable Air Speed:
up to 330 cfm

Working Weight:
50 lbs.

MODEL: HFGB300

Working Dimensions:
16" L × 16" W × 32" H

Air Speed:
330 cfm

Working Weight:
68 lbs.

MODEL: HFGBRFUV

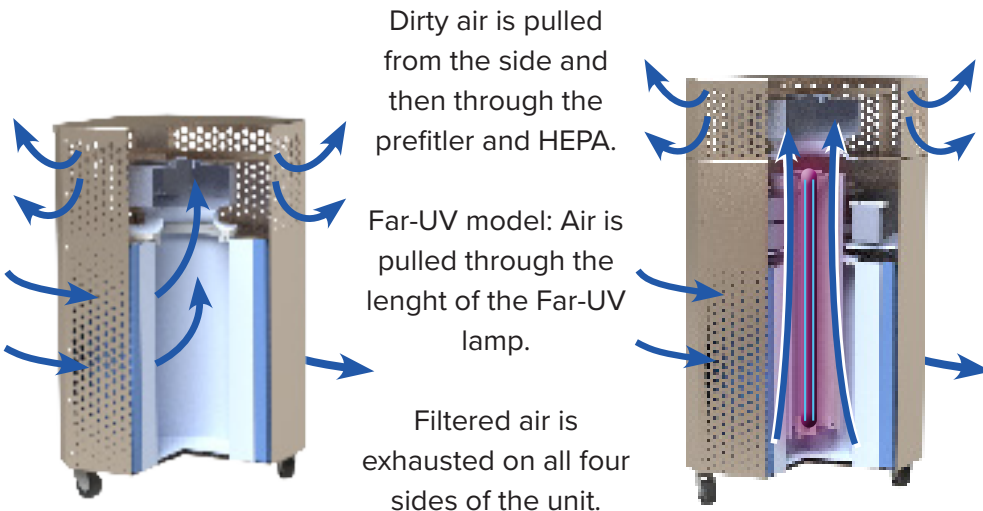


PRE FILTERS

Mesh pre-filters wrap
the HEPA-filter.

MODEL: HFGBR.PPF

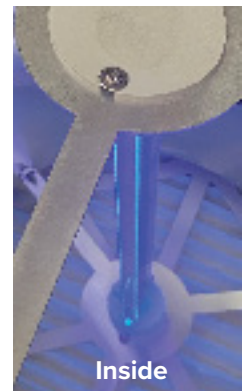
How it Works



LAMP

18" CARE
222 lamp

3,000 hour
lifetime



MODEL: FUV-ADM.RLMPUSH

GERMBUSTER Features



Filtration

HEPA-Filter: 99.97% exceeds ASHRAE 52.2 MERV 16 ratings.

MERV-7 pleated pre-filter protects the HEPA.

Each filter tested per IEST standards:
Air flow IEST-RP-C001.

Easy HEPA and pre-filter changes.



State of the Art UV Technology

GERMBUSTER with FAR-UV includes one lamp with 3,000-hour lifetime.

300-watt power supply.

Provides disinfection of air in a single pass.

High reflectivity lamp tube for maximum exposure.

FAR-UV lamp sight glass.



Convenience

Easy to move.

Simple operation.

Child-proof filter cabinet.



Fan Motor

ECM fan motor uses up to 88% less energy.

50,000 hour life expectancy = years of continuous use.

Quieter than competing models. 42-point quality inspection.

Precision-tuned, variable speed air volume control for GERMBUSTER 300 and optimal 1-speed setting for GERMBUSTER Far-UV.



Electrical

US 120 v AC
50/60 Hz | 6-12 Amps



Self-storing 8' commercial grade power cord.



Build Quality

Same build quality as the flagship HEPACART®.

Constructed out of commercial grade stainless steel and blind self-sealing rivets.

Unit moves on heavy-duty casters.

Looks professional in any environment.

Easy to clean and maintains appearance with no discoloration from daily cleanings.

Applications

GERMBUSTER FAR-UV EFFICACY



Hospitals and Clinics



Schools



Assisted Living



Office

GERMBUSTER EFFICACY AT DOSES OF 222-NM FAR-UVC LIGHT AT 330 CFM

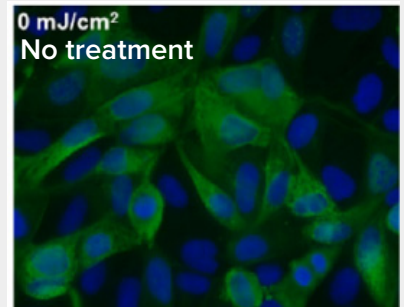
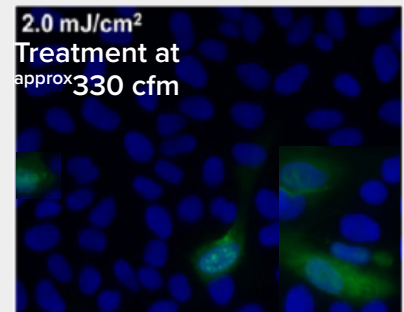
To estimate effective Far-UVC dosing with the GERMBUSTER FAR-UV, we have measured the lamp intensity as installed and calculated the average dose achieved on the airstream.

This data is then compared with the published data for air disinfection using Far-UV to provide a relative estimate for Far-UV cleaning of the air.

Typical fluorescent images of MDCK epithelial cells infected with influenza A virus (H1N1). The viruses were exposed in anaerosolized form in the irradiation chamber to doses of 0, 0.8, 1.3 or 2.0 mJ/cm² of 222-nm far-UVC.

Infected cells fluorescent green (blue=nuclear stain DAPI; green=Alexa Fluor-488 conjugated to anti-influenza A antibody). Images taken with 40x objective.

For the GERMBUSTER FAR-UV per air exchange at: 330 cfm the unit achieves 1.51 mJ/cm²



Advantages of FAR-UV

- Much safer for human skin and eyes
- Applications for human occupied areas
- Better against spores and preventing re-growth
- Strong and effective germicidal properties
- Eco-friendly lamps with no mercury
- No warm up time with instant on/off

