

ABOVE CEILING INSTALLATION PROTECTION

CAP [CABLING ACCESS POINT]

US PATENT #: 8,397,451



Save Time, Protect the Cable and Grid with CAP Above-Ceiling Productivity Tools in 7 models

At HEPACART®, we strive to make equipment that provides durability, safety and flexibility for work in a variety of containment projects.

Choose the best CAP [Cabling Access Point] for your project.



Grid Size

All CAP models will fit in a 2 ft. x 4 ft. ceiling grid with the addition of the CAP Extension.

The CAP Access fits natively into a 2 ft. x 4 ft. ceiling grid.

Reduces the labor and expense involved with pulling wire and cable.



Specialties

CAP Classic

For all purpose work

CAP Vision

See the pull above-ceiling

CAP Fiber

For sensitive fiber pulling

CAP Conduit

For flexible conduit pulling

CAP Bundle

For the biggest pulls

CAP Access

Perfect for data closets

CAP Corner

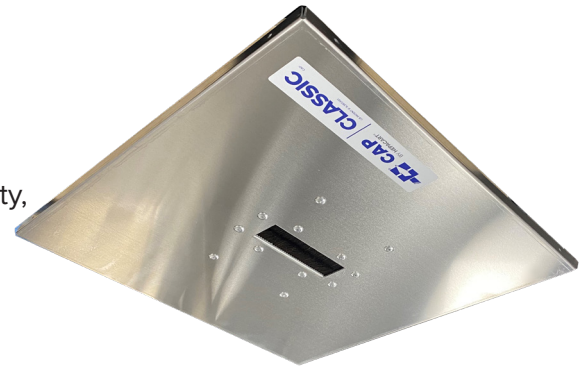
Assists with the turn

CAP Extension

Fills the 2 ft. x 2 ft. space

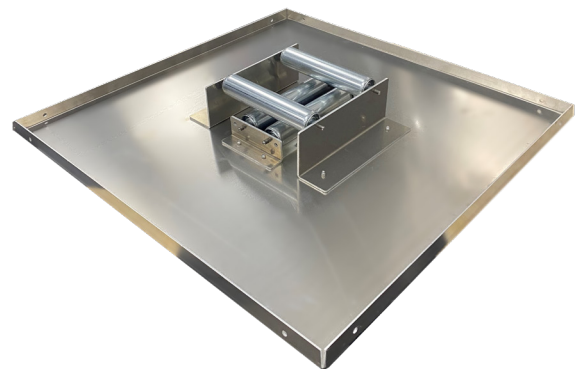
CAP Duct

Ports air thru ceiling.



View from Below

Each CAP lays flat in the ceiling grid. Cable and wire then are pulled through the different sizes of protected openings.



View from In-Ceiling

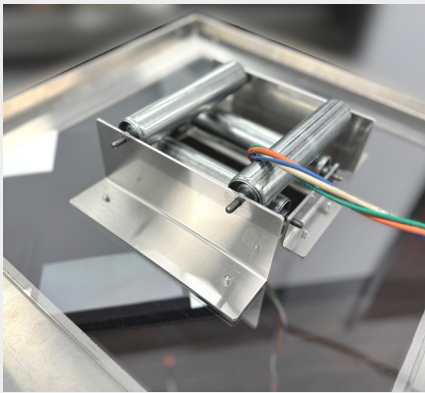
2 sets of rollers help guide the wire and cable being pulled in any direction. Cable and wire move across these rollers smoothly.

CAP [Cabling Access Point] Features



Convenience

Each CAP model has an access opening with rollers on the back to decrease friction and guide the wire through the ceiling.



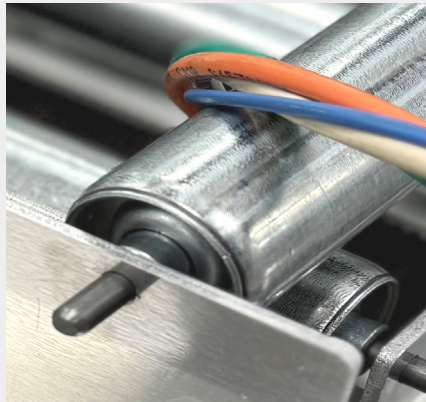
Simple installation involves laying the CAP flat in the grid ceiling or securing the CAP to the building structure using the holes at each corner.



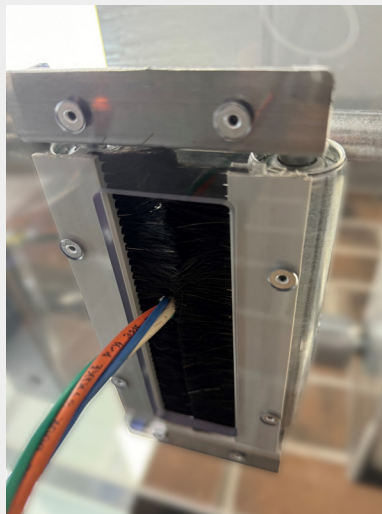
Protection

The CAP protects the grid and cable during cable pulling and installation.

Protecting the cable reduces the likelihood of faulty installations.



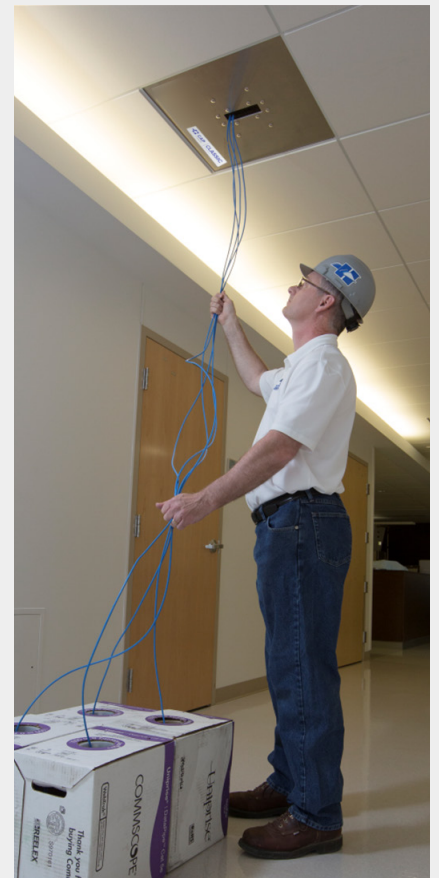
Each CAP opening is protected by horsehair bristles which keep dust, dirt and debris from falling into the space below.



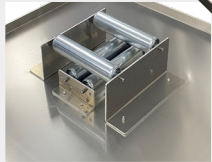
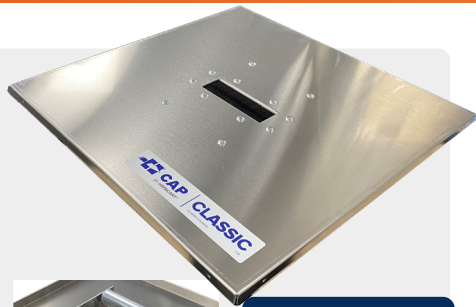
Productivity

Use of the CAP system saves labor hours as the productivity tool requires using fewer installers and speeds up cable installation.

Trusted by thousands of electrical and low voltage installers around the world.



CAP [Cabling Access Point] Models



Designed for small or mid-size cable bundles

CAP CLASSIC

Working Dimensions:

24 in. L x 24 in. W

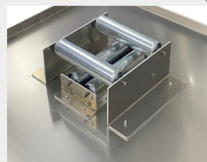
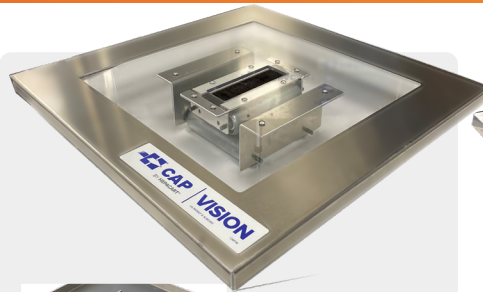
Working Weight:

8 lbs.

Cable Opening:

2 in. x 6 in.

MODEL: CAP



Same as the Classic but with clear window

CAP VISION

Working Dimensions:

24 in. L x 24 in. W

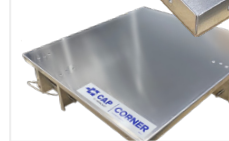
Working Weight:

9 lbs.

Cable Opening:

2 in. x 6 in.

MODEL: CAP-W



Changes direction of the cable to make a corner

CAP CORNER

Working Dimensions:

24 in. L x 24 in. W

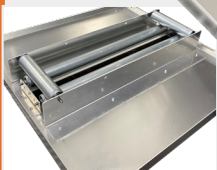
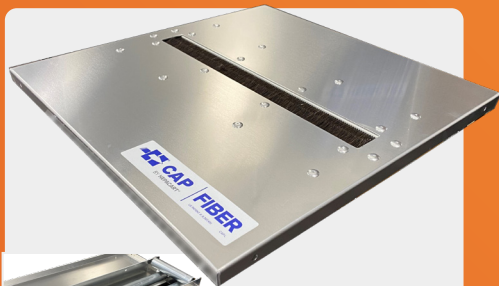
Working Weight:

10 lbs.

Special Feature:

Slide-out pins for easy cable removal

MODEL: CAP-C



Designed for sensitive fiber optic cables

CAP FIBER

Working Dimensions:

24 in. L x 24 in. W

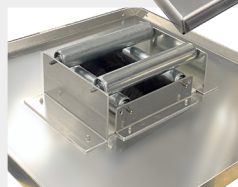
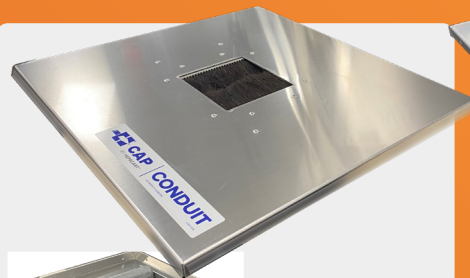
Working Weight:

13 lbs.

Cable Opening:

2 in. x 20 in.

MODEL: CAP-L



Designed for flexible conduit pulls

CAP CONDUIT

Working Dimensions:

24 in. L x 24 in. W

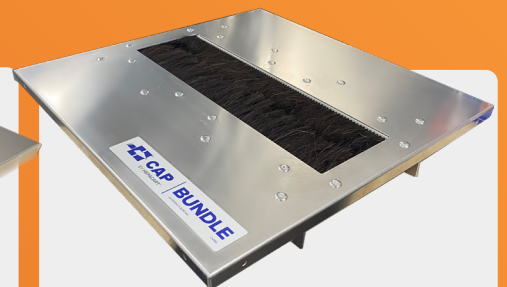
Working Weight:

10 lbs.

Cable Opening:

6 in. x 6 in.

MODEL: CAP66



Designed for large cable or conduit pulls

CAP BUNDLE

Working Dimensions:

24 in. L x 24 in. W

Working Weight:

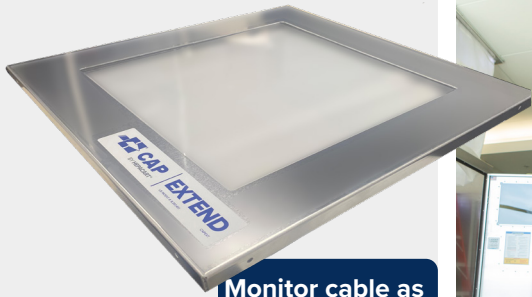
14 lbs.

Cable Opening:

6 in. x 20 in.

MODEL: CAP206

CAP [Cabling Access Point] Installation



Monitor cable as its pulled into the ceiling.

CAP EXTEND

Working Dimensions:

24 in. L x 24 in. W

Working Weight:

5 bs.

Pairs with any 24 in. x 24 in.

CAP for 48 in. tiles

MODEL: CAPEXT



1



2



3

Each CAP model installs easily and lays flat and flush with ceiling grid with the protected opening facing down toward the floor and rollers facing the ceiling.

The CAP looks professional, saves time and money and protects the environment below.



4



Add/remove cable without removing CAP. Ideal for data closet usage.

CAP ACCESS

Working Dimensions:

24 in. L x 48 in. W

Working Weight:

22 bs.

Cable Opening:

4 in. x 8 in.

MODEL: CAP-48



Duct air via flex hose through the drop down ceiling.

CAP DUCT

Working Dimensions:

24 in. L x 24 in. W

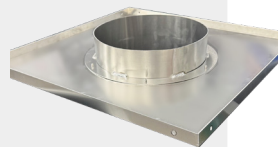
Working Weight:

3 bs.

Duct Opening:

12 in.

MODEL: CAP-DUCT



5