

**HEPACART®**

FILTRATION

|

CONTAINMENT

|

DISINFECTION

# About HEPACART®

SINCE 2006



## The Mission

The HEPACART® mission is to develop productive, durable, job-flexible, safe and sustainable solutions that protect vulnerable populations from pathogens and dust in critical, high-risk environments.

A secondary mission is to assist contractors and facilities managers with filtration, containment and disinfection measures that can save time and money. Since its inception in 2006, HEPACART® has committed to the highest standards.

The HEPACART® line of infection control solutions is trusted by more than 5,000 healthcare facilities in the U.S and many more worldwide as well as by 91 of the top 100 construction contractors.

## Deployment

- Hospitals, surgery centers and clinics
- Specialty healthcare
- Pharmaceutical operations
- Data storage centers
- Life science facilities
- Dentistry / orthodontics
- Medical device production
- Semiconductor manufacturing
- Hospitality and casino
- Schools and education

## Applications



- Dust containment
- Air filtration
- Cable and wire installation
- Infection control and prevention
- Room or wing isolation
- HVAC projects
- Light replacement
- Seismic inspection
- Low-voltage installation
- Emergency preparedness
- Plumbing installation/repair
- Ceiling tile replacement
- Electrical work
- Fire damper & firestopping work
- Device and tool disinfection
- Nurse-call Installation and upgrade
- Clean Room Maintenance
- Surface disinfection
- Floor Maintenance



# About HEPACART®

TRUSTED WORLDWIDE

## The HEPACART® Commitment



### DURABILITY

The first HEPACART® units sold in 2006 are still going strong today. HEPACART has a proven return on investment.



### FLEXIBILITY

The HEPACART® product line has field up-grade options for the unique challenges of current and future projects.



### SAFETY

HEPACART® tests and certifies each unit specifically for air-quality and air-flow. You can rest assured HEPACART® products are built for the safety of the worker and the patient.



### SUSTAINABILITY

HEPACART® products significantly reduce the vast amount of plastic, wood and drywall associated with renovation projects that end up in landfills.



### AESTHETICS

HEPACART® products mean your company is serious about dust and infection control. HEPACART® customers appreciate the superior craftsmanship reinforcing a professional image.



### PRODUCTIVITY

Customers report the productivity gain alone, built into HEPACART® products, allows them to pay for themselves in a short period of time.

## At HEPACART®, We Believe a Successful Project Starts with the Fundamentals:



**Choosing the best in class equipment.**



**Utilizing equipment in a competent way with a consistent and safe process.**



**Looking good doing it. Good = safe, clean, and professional.**

## We call this the “ART of Containment”!

# About HEPACART®

MEETING FACILITY CHALLENGES

## Solutions

- Mobile and portable ceiling, wall and floor containment projects.
- Mobile room isolation modules for renovation and pandemic response.
- Temporary wall barrier systems for renovation and pandemic response.
- Air and surface UV disinfection for renovation and isolation.
- HEPA-filtered air scrubbers and diffusers for renovation.
- Commercial grade air purifiers for healthcare, education, assisted living, office and more.
- Cabling and installation tools for electricians and low voltage contractors.

## Purchase Worldwide

DIRECT THRU:



OR THRU A DISTRIBUTION PARTNER



AVAILABLE INTERNATIONALLY THRU:



United Kingdom / European Union



Japan



Canada



Canada



Asia



Australia / New Zealand



Middle East

TESTED AND CERTIFIED BUILT IN HEPA

# HEPACART® Mobile Containment

BUILT IN HEPA FILTRATION FOR  
ICRA COMPLIANCE LEVELS I-IV

## Available in **THREE** Sizes, featuring **TWO** Extension Systems, plus **FIVE** **Exclusive Options**

At HEPACART®, we strive to make equipment that provides the durability, safety and flexibility for work in a variety of containment projects. In reviewing our flagship HEPACART®, choose the size, extension system and options for your project.



### Unit Size

**HEPACART® 55**

for a crew of one plus tools and a ladder.

**HEPACART® 74**

for a crew of two plus tools and a ladder.

**HEPACART® 74X**

for large projects for a crew of two plus tools, a ladder and large equipment.



### Mechanism

**HEPACART® Classic**

features four spring-loading, telescoping poles and exclusive slide-out option.

Advantage: Flexibility

**HEPACART® Auto-Lift**

features actuators lifted with push-button controls.

Advantage: Ease of Use

Both reach standard extended heights of 10' 6" with accessories to reach higher ceilings. Neither require tools for operation.



### Options

**Wall Access**

Work in walls and ceilings

**Adjustable Ladder Extension Module**

Work high in the ceiling

**Vision Panels**

Unlimited visibility

**Upgraded Digital Pressure Monitor**

Visible and automated alarms.

**Lockable Top**

For secure storage



### Unit Arrives Ready for Work

Every HEPACART® filtration is tested and certified prior to shipment. All HEPACART® equipment will undergo a quality inspection check and be tested and certified.

## Standard Features of Every HEPACART®

### Filtration



Lab Tested design.  
Each unit tested and  
certified with  
HEPA 99.99% at 0.3  
 $\mu\text{m}$  exceeds ASHRE  
standards (MERV 16).

MERV 8 pleated  
pre-filter.

500+ cfm max exhaust.  
Variable speed control  
allows for precise  
calibration.

HEPA filter mounted  
post-fan for superior  
particle reduction.



### Convenience



Door package has a  
single window,  
lock and key set and work  
permit holder.



Differential pressure  
gauge.



Walk-off / tacky  
matstorage compartment.



In-use light.



Accommodates nearly  
any size or type of ladder.

### Durability



Fully-boxed frame.



Lightweight, unibody  
design.

Assembled with  
aircraft-grade inserts  
and truss-head screws;  
mounted on 900 lb.  
rated non-marring  
casters with brakes.



**Adjustable enclosure  
lasts 5x longer.**

Antimicrobial, flame  
odor and stain  
resistant, anti-static  
and durable with no  
fiber shedding.  
Clear zipping top  
Healthcare approved.

### Electrical



Available in 120 v AC for  
North America / Japan.

(see International for  
other configurations)



20 ft. retractable cord  
with three-way electrical  
switch.

Dimmable HALO  
LED lighting system  
illuminates work area.



## Range of Sizes for Any Project


**HEPACART® 55**

**HEPACART® 74**

**HEPACART® 74X**
**Capacity:**

1 Person Plus Tools and Ladder

**Working Dimensions:**

60 in. L x 29 in. W

**Internal Dimensions:**

55 in. L x 29 in. W

**Fits through any 36" door**

Extends to 10 ft. 6 in. H

Extends higher with additional options.

Encloses one 2 ft. x 4 ft. ceiling tile.

Add the Multiple Tile Adapter to access two, 2 ft. x 4 ft. ceiling tiles.

**Working Weight:**

350 lbs.

**Capacity:**

2 People Plus Tools and Ladder

**Working Dimensions:**

80 in. L x 29 in. W

**Internal Dimensions:**

74 in. L x 29 in. W

**Fits through any 36" door**

Extends to 10 ft. 6 in. H

Extends higher with additional options.

Encloses one 2 ft. x 4 ft. ceiling tile.

Add the Multiple Tile Adapter to access two, 2 ft. x 4 ft. ceiling tiles.

**Working Weight:**

375 lbs.

**Capacity:**

2 People Plus Tools, Ladder and Equipment

**Working Dimensions:**

80 in. L x 39 in. W

**Internal Dimensions:**

74 in. L x 39 in. W

**Fits through any 42" door**

Extends to 10 ft. 6 in. H

Extends higher with additional options.

Encloses one 2 ft. x 4 ft. ceiling tile.

Add the Multiple Tile Adapter to access two, 2 ft. x 4 ft. ceiling tiles.

**Working Weight:**

400 lbs.

# Available as a Classic and Auto-Lift



## HEPACART® CLASSIC

### Most Versatile Raise and Lower System

Telescoping, spring-loaded extension poles for a tight seal.

Individual articulation on all four corners adjust to almost any ceiling.

No tools required.

Offsets up to 8 in. at the ceiling.

### Exclusive: Top Slide-Out



Ideal for working around wall obstacles including handrails, art, nurse's stations, etc.  
Locks into place.

## HEPACART® AUTO-LIFT



### Unmatched Ease-of-Use

Two internal actuators adjust the enclosure individually to the desired height with the push of a button.

Allows for angle adjustment up to 45° for uneven ceilings or floors.

Easy to replace actuators with stationary motors.

Each actuator rated for 200 lbs.

No tools required.



## Upgrade Options



### TOTAL WALL ACCESS

Sliding door in the hard wall opens to provide comfortable wall access between 12" and 60".



Removable windows in the enclosure allows access to the wall area above

PART #: TWA



### LADDER EXTENSION MODULE

Reach up to 16 ft. in the ceiling with taller ladders.  
Keeps worker inside of the cart.



Collapses and folds into place for transport.

PART #: ALEM



### VISION PANELS

Available as single transparent panel often paired with wall access option.

PART #: LVP OR RVP



Available as two transparent panels for complete 360 visibility into the cart.

PART #: TVP

## Work Efficiency Accessories



### MULTIPLE TILE ADAPTER

Expands access 2x to 3x into multiple tiles while keeping the same footprint on the floor.

PART #: MTA



### BATTERY POWER STATION

Lithium-ion battery kit comes with power station, fast charger and exterior battery shelf.

PART #: HC-BAT-KIT-GZY1500X

## Upgrade Options



### DIGITAL PRESSURE MONITOR

Provides visible and audible alarms and configurable to monitor +/- air pressure.

Complete system with graphic user interface.

PART #: HCRPM



### JOB BOX LOCKABLE TOP

Converts any Classic cart to a lockable job box to secure items.

Top swings up and pins into the top of the cart.

PART #: LT

## Accessories and Consumables



### SHELF LADDERS

Available in 6 ft., 8ft. and 10 ft.  
Other ladders sourced on request.

PART #: GBSL



### TOP DUST COVER

Keeps the cart free from dust  
while in storage or transport

PART #: DC



### CLEAN KIT

Stores under the ladder shelf.  
Includes cleaning solution  
and microfiber towels.

PART #: HCKK



### HEPA VACUUM

Quiet, powerful 1.25 HP  
motor capable of 67 CFM  
HEPA-tested 99.99% at 0.3 m

PART #: T9F287029



### FULL DUST COVER

Encloses the entire cart keeping  
it dust and scratch free in  
storage or during transportation

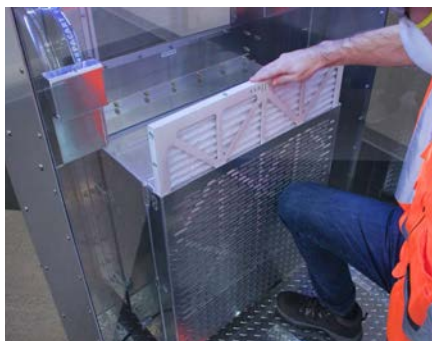
PART #: FDC



### WALK OFF MATS

Measures 18" x 36" / 60 pack  
Fits in Clean Mat tray  
below the door.

PART #S: CM or CMR (Mats Only)



### PRE FILTERS

24" x 24" x 1", MERV8 high  
velocity

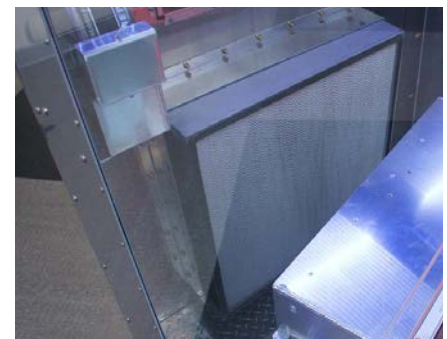
PART #: PF24241



### ENCLOSURES

Antimicrobial, flame odor and  
stain resistant, anti-static and  
durable with no fiber shedding.  
Standard and Tall options.

PART #S: PTC or TPTC



### HEPA FILTER

Double gasketed, 24" x 24" x 6"  
99.99% at .3 microns.

PART #: HF24246

## Enclosure Options to Add Height and Visibility



### STACKABLE MODULES

Go even higher (14+ ft.)  
Each stackable module is 2 ft.  
Securely fastens to the HEPACART®.  
For Auto-Lift models only.

PART #: SEMHC

All enclosures are antimicrobial; flame, odor and stain resistant, anti-static and durable with no fiber shedding.



### ENCLOSURE WINDOWS

Two large windows in each side.  
Window panels are removable  
for wall access.  
For standard and tall enclosures.

PART #: WAE

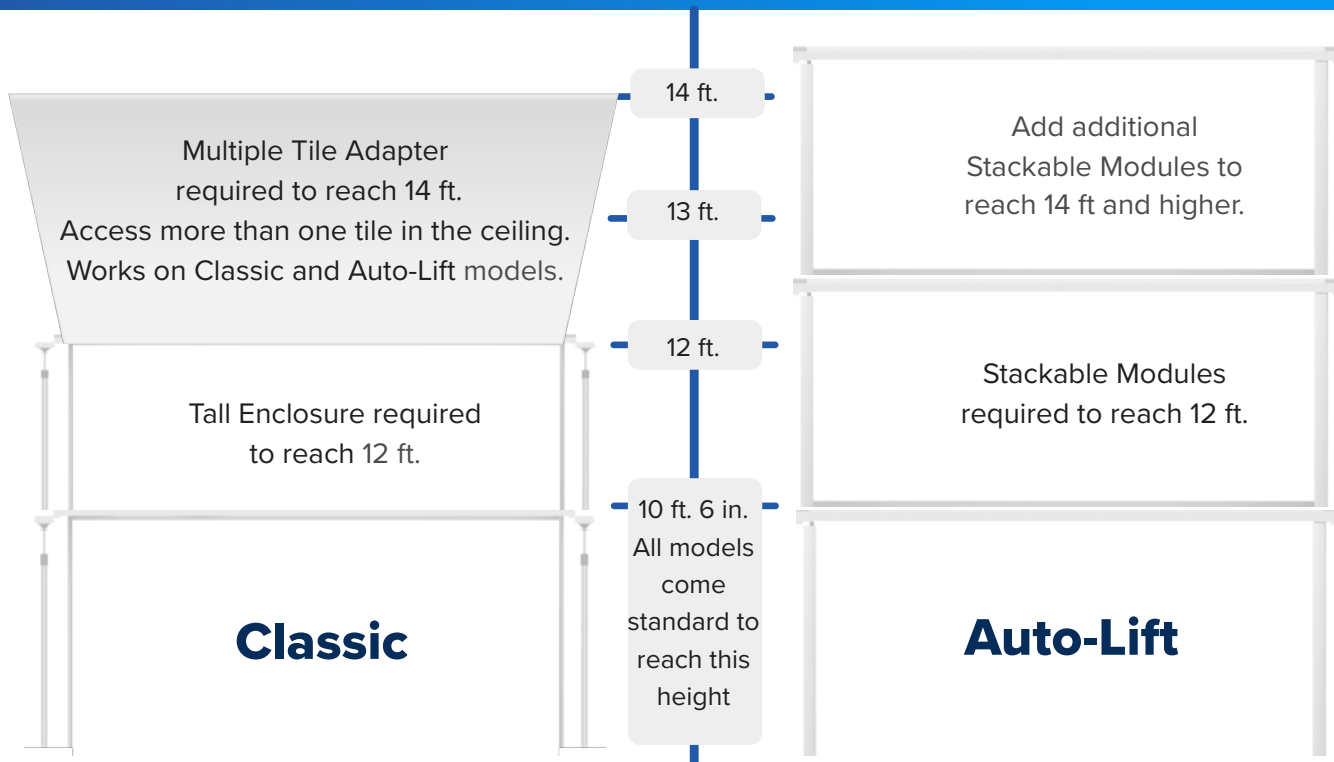


### TALL ENCLOSURES

Reaches ceilings up to 12 ft.  
Installs in minutes.  
Includes two pass-thru slips  
For Classic models only.

PART #: TPTC

## Reaching New Heights with HEPACART®



# Testing and Certification Services

## Air Quality Peace of Mind in 5 Steps

Based on this battery of tests, you can be confident that every HEPACART® from the factory is ready to clean the air to the highest ICRA level with 99.99% efficiency or greater at 0.3 microns. The filter integrity tests (IEST-RP-CC0034.2) and particulate tests confirm ISO 14644 compliant Class 5 air.

1







### Lab Tested Design

The HEPACART® designed system has been tested by third-party labs including LMS Technologies with impressive results.



**LMS TECHNOLOGIES**

Independent lab testing  
Bloomington, MN USA  
Test Type: Single-pass HEPACART® :

Tests		Up/Down x100
	Staph aureus Average	99.997%
	MS-2 Average	99.9999%
	Aspergillus Average	99.996%
<hr/>		
Staph aureus	MS-2	Aspergillus
		
HEPA on downstream	HEPA on downstream	HEPA on downstream

Scope: Perform a viability test on Hepacart® model DAHC55U-H with 3 organisms: Staph aureus ATCC 6538, Aspergillus Niger ATCC 1004, and MS-2 Phage ATCC 15597-B1. Calculate collection efficiency. Method: Testing was performed in a custom manufactured HEPA filtration device. Organisms were grown on appropriate media, harvested and resuspended in saline to  $1.0 \times 10^6$ . Suspensions of organisms were then aerosolized into the Hepacart using a nebulizer for 5 min.

Downstream air was sampled using a SKC biostage impactor calibrated to draw 28 liters/min. The recovered organisms were enumerated after 1-2 days incubation. Testing for each organism was done in triplicate. The filtration efficiency was calculated by formula:  
Efficiency = (Upstream-downstream)/Upstream x 100.

4

### Testing Equipment Calibrated Annually

All testing equipment is recertified on an annual basis.

5

### Each Unit Is Individually Tested

Every HEPACART® is tested as an assembled unit with an ATI Photometer, a EBT Balometer and an EBT Micromanometer with an ATI Generator.

Only after a HEPACART® completes and passes testing procedures is it issued a Certificate of Compliance.



## ON-SITE TESTING AND COMPLIANCE SERVICES

Need recertification of your HEPACART® or other filtration equipment?

HEPACART® has a testing and compliances service network across North America.



Turn key quoting, appointment scheduling and execution of on-site filter integrity and air-flow testing.



Recommended annually on all HEPA-filtration mobile units for ICRA compliance.



## International Listing Authorities



### NORTH AMERICA / JAPAN

Testing performed by Intertek.  
Conforms to UL Standard 507 and certified to CSA STD 22.2 No.1.  
Standard North American grounded plug.  
20 ft. cord reel and GFCI outlets.

### AUSTRALIA / ASIA MIDDLE EAST SOUTH AMERICA

Testing performed by Intertek.  
Conforms to CE requirements.  
Electrical plugs and outlets configured to destination country specifications.  
Self storing, power cord.  
220 v AC / 50 Hz

### UNITED KINGDOM / EUROPEAN UNION

Testing performed by CE Marking Authority.  
Conforms to UKCA and CE requirements.  
Electrical plugs and outlets configured to destination country specifications.  
Self storing, power cord.  
220 v AC / 50 Hz

## Worldwide Distribution Network Network



International model for Denmark  
HEPACART 74 Auto-Lift



United Kingdom / European Union



Japan



Canada



Canada



Asia



Middle East



Australia / New Zealand

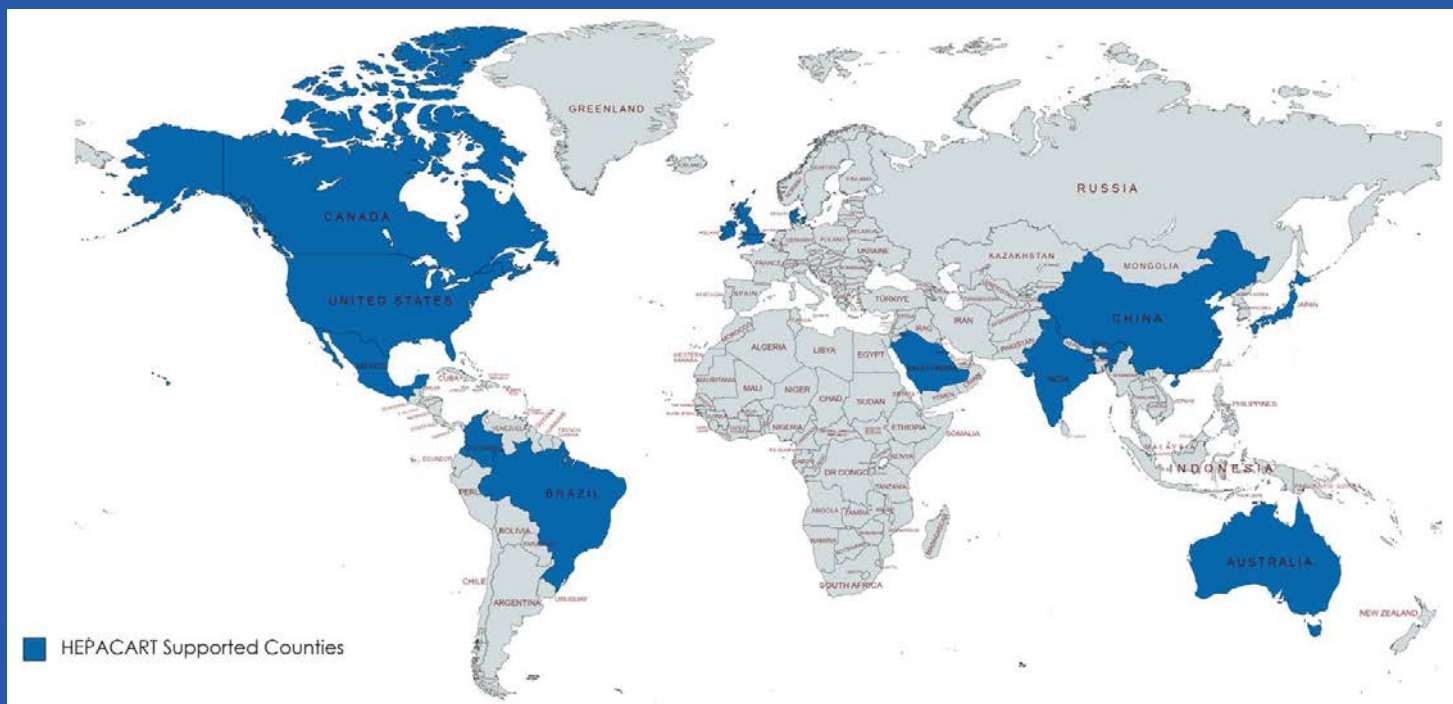


International

**Every HEPACART® Unit is Tested and Certified**



## Trusted in Thousands of Facilities Worldwide



## HEPACART® International Sales

International HEPACARTS® have all the same Best of Class features, quality control and filter integrity testing. There are a few key differences.

### Shipping

Single units up to quantity of four are shipped in treated international crates. Larger orders require cargo containers.



### Ladder Safety

All international carts have two additional ladder clamps on the ladder shelf and two floor brackets designed to securely capture ladder feet.



CE and UKCA units feature a self-storing power cord, specific plug for the destination country. CE and UKCA units also feature specific internal outlets.



North American models and Japan feature the standard electrical configuration.



## CLASSIC Models Guide

### HEPACART® 55 CLASSIC Models

MODEL #	CONFIGURATION
HC55C-000002	HEPACART® 55 - Classic (Base Model)
HC55C-011002	HEPACART® 55 - Classic + Right Vision + Left Vision
HC55C-000012	HEPACART® 55 - Classic + Digital Pressure Monitor
HC55C-002002	HEPACART® 55 - Classic + Wall Access
HC55C-012002	HEPACART® 55 - Classic + Left Vision + Wall Access
HC55C-000102	HEPACART® 55 - Classic + ALEM
HC55C-002102	HEPACART® 55 - Classic + Wall Access + ALEM

### HEPACART® 74 CLASSIC Models

SKU	CONFIGURATION
HC74C-000001	HEPACART® 74 - Classic (Base Model)
HC74C-011001	HEPACART® 74 - Classic + Left Vision + Right Vision
HC74C-000012	HEPACART® 74 - Classic + Digital Pressure Monitor
HC74C-002002	HEPACART® 74 - Classic + Wall Access
HC74C-012001	HEPACART® 74 - Classic + Left Vision + Wall Access
HC74C-000102	HEPACART® 74 - Classic- ETL + ALEM
HC74C-002102	HEPACART® 74 - Classic + Wall Access + ALEM
HC74C-002111	HEPACART® 74 - Classic + Wall Access + ALEM + Digital Pressure Monitor

### HEPACART® 74X CLASSIC Models

SKU	CONFIGURATION
HC7XC-000002	HEPACART® 74X - Classic (Base Model)
HC7XC-110002	HEPACART® 74X - Classic + Left Vision + Right Vision
HC7XC-000012	HEPACART® 74X - Classic + Digital Pressure Monitor
HC7XC-002002	HEPACART® 74X - Classic + Wall Access
HC7XC-012002	HEPACART® 74 - Classic + Left Vision + Wall Access
HC7XC-000102	HEPACART® 74X - Classic + ALEM
HC7XC-000102	HEPACART® 74X - Classic + Wall Access + ALEM

## AUTO-LIFT Models Guide

### HEPACART® 55 AUTO-LIFT Models

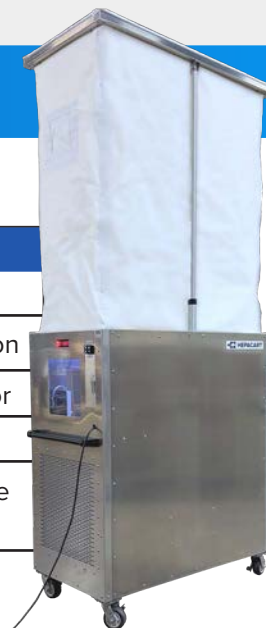
MODEL #	CONFIGURATION
HC55A-000002	HEPACART® 55 - Auto-Lift (Base Model)
HC55A-011002	HEPACART® 55 - Auto-Lift + Left Vision + Right Vision
HC55A-000012	HEPACART® 55 - Auto-Lift + Digital Pressure Monitor
HC55A-000102	HEPACART® 55 - Auto-Lift + ALEM
HC55A-000112	HEPACART® 55 - Auto-Lift + ALEM + Digital Pressure Monitor

### HEPACART® 74 AUTO-LIFT Models

SKU	CONFIGURATION
HC74A-000002	HEPACART® 74 - Auto-Lift (Base Model)
HC74A-011002	HEPACART® 74 - Auto-Lift + Left Vision + Right Vision
HC74A-000012	HEPACART® 74 - Auto-Lift + Digital Pressure Monitor
HC74A-000102	HEPACART® 74 - Auto-Lift + ALEM
HC74A-000112	HEPACART® 74 - Auto-Lift + ALEM + Digital Pressure Monitor

### HEPACART® 74X AUTO-LIFT Models

SKU	CONFIGURATION
HC7XA-000002	HEPACART® 74 - Auto-Lift (Base Model)
HC7XA-011002	HEPACART® 74 - Auto-Lift + Left Vision + Right Vision
HC7XA-000012	HEPACART® 74 - Auto-Lift + Digital Pressure Monitor
HC7XA-000102	HEPACART® 74 - Auto-Lift + ALEM
HC7XA-000112	HEPACART® 74 - Auto-Lift + ALEM + Digital Pressure Monitor



## Custom Design and Engineering Services

### Need Highly Specialized or Custom Mobile Containment?

#### Self Contained AnteRoom

Designed for major construction company needing the air scrubber contained in the unit.



#### Extended Reach HEPACART®

Designed for major aviation technology supplier with 16 ft. ceilings and a high-risk environment where dust can damage sensitive



#### Warden Phone HEPACART®

Designed for major construction company needing to access areas for installation of warden phones at required height



#### Dual Entry HEPACART®

Designed for international electrical contractor to allow two persons in the ceiling at once.



#### Transport HEPACART®

HEPA-filtered transport cart designed for moving and containing heater/chiller units in surgical suites.



#### Linked Unit HEPACART®

Designed for a contractor working a large piping project above ceiling. Units could be unlinked and used separately.



CERTIFIED HEPACART EQUIPMENT

# HEPACART® Rental Program



## Best in Class Equipment for Short-Term and Limited-Capital Projects

No matter the duration of your project, you can always count on HEPACART® equipment to deliver high-quality results. Our equipment is available to meet your project timeframe, and we keep a large inventory in-stock and ready to ship quickly from our facility.

This means you can start your project safely and efficiently as soon as possible.

### How it Works

HEPACART® has made renting easy with e-rental agreement, flat zone pricing, clean and certified equipment, crated shipments for protection and easy monthly billing.



#### Equipment Ships in a Protected Crate

We ensure your equipment arrives undamaged and ready for the upcoming project.



#### Checks Are Performed on Your Equipment

Your equipment will be up-to-date, clean, and performing at the highest rate.



#### Equipment Arrives Ready to Work

Your equipment will be tested and certified as necessary including any HEPA-filtration system.

## Range of Equipment Options for Any Project

**HEPACART**

Mobile dust containment cart with built-in HEPA-filtered negative air machine.

The rugged construction of HEPACART® products makes them a Best-in-Class option for rental.

**AnteRoom**

Room isolation module prevents airborne particulates from contaminating air.

**Rent-To-Own**  
Apply a Portion of Paid Rental to Purchasing the Rented Equipment

**HEPAFORCE**

Negative air machines are used to scrub the air and create negative or positive pressure.

## Turn-Key Rental Process Makes it Easy

At HEPACART, we do our best to make the rental process go as smooth as possible. With same day quoting, flat monthly rates, same day shipping of our rental inventory, monthly billing, flexible rental periods and scheduling rental pickups; we do our best to make this process hassle-free.



**Quick Turnaround  
Time from Quote to  
Delivery**



**Includes Testing  
Results and HEPA  
Certification**



**Ships in Durable  
Crates to Arrive  
Ready to Work**



**When Project is  
Completed Call Us  
to Arrange Pickup**

## Call or Email Us Today To Get Started

[WWW.HEPACART.COM/RENTAL-PROGRAM](http://WWW.HEPACART.COM/RENTAL-PROGRAM)



9828 Pflumm Rd, Lenexa, KS 66215



913.789.9590



[info@hepacart.com](mailto:info@hepacart.com)

# DUSTBUGGY® Mobile Containment

BUILT IN HEPA FILTRATION FOR  
ICRA COMPLIANCE LEVELS I-II

## Available in **THREE** Sizes, featuring **TWO** Extension Systems, plus **FIVE** Exclusive Options

The DUSTBUGGY® line is built just like a HEPACART® but with no internal negative air machine. Choose the best DUSTBUGGY® size, extension system and options for your project.



### Unit Size

**DUSTBUGGY® 55**  
for a crew of one plus  
tools and a ladder.

**DUSTBUGGY® 74**  
for a crew of two plus  
tools and a ladder.

**DUSTBUGGY® 74X**  
for large projects for a  
crew of two plus tools,  
a ladder and large  
equipment.



### Mechanism

**DUSTBUGGY® Classic**  
features four spring-  
loading, telescoping  
poles and exclusive  
slide-out option.  
Advantage: Flexibility

**DUSTBUGGY® Auto-Lift**  
features actuators lifted  
with push-button  
controls.  
Advantage: Ease of Use

Both reach standard  
extended heights of 10'  
6" with accessories to  
reach higher ceilings.  
Neither require tools  
for operation.



### Options

**Wall Access**  
Work in walls  
and ceilings

**Adjustable Ladder  
Extension Module**  
Work high in the ceiling

**Vision Panels**  
Unlimited visibility

**Upgraded Digital  
Pressure Monitor**  
Visible and automated  
alarms.

**Lockable Top**  
For secure storage



### Unit Arrives Ready for Work

Every **DUSTBUGGY®**  
arrives fully assembled and  
ready to use upon delivery.

## Standard Features of Every DUSTBUGGY®

### Durability



Fully-boxed aluminum frame.



Lightweight, uni-body design and assembled with aircraft-grade inserts and truss-head screws.

900 lb. rated non-marring casters with brakes

Swivel locks on one end.



Total Cart rated 1500 lbs.

**Adjustable enclosure lasts 5x longer.**

Antimicrobial, flame odor and stain resistant, anti-static and durable with no fiber shedding. Clear zipping top Healthcare approved.

### Convenience



Door package has a single window, lock and key set and work permit holder.



Differential pressure



Walk-off / tacky mat



Accommodates nearly size or type of ladder.

### Electrical



Available in 120 v AC for North America / Japan.

(see International Pages for other configurations)



20 ft. retractable cord. Three-way electrical switch.

Dimmable HAL LED lighting system illuminates the work area.



### Retrofittable



Upgrade to a HEPACART® in the field at a later date.

Retrofit kit includes the end panel with all electrical, including retractable cord, lights and three-way switch



and a tested and certified internal negative air machine attached.



## Range of Sizes for Any Project



**DUSTBUGGY® 55**



**DUSTBUGGY® 74**



**DUSTBUGGY® 74X**

**Capacity:**

1 Person Plus Tools and Ladder

**Working Dimensions:**

60 in. L x 29 in. W

**Internal Dimensions:**

55 in. L x 29 in. W

**Fits through any 36" door**

Extends to 10 ft. 6 in. H

Extends higher with  
additional options.

Encloses one standard  
2 ft. x 4 ft. ceiling tile.

Add the Multiple Tile Adapter to  
access two, 2 ft. x 4 ft. ceiling tiles.

**Working Weight:**

300 lbs.

**Capacity:**

2 People Plus Tools and Ladder

**Working Dimensions:**

80 in. L x 29 in. W

**Internal Dimensions:**

74 in. L x 29 in. W

**Fits through any 36" door**

Extends to 10 ft. 6 in. H

Extends higher with  
additional options.

Encloses one standard  
2 ft. x 4 ft. ceiling tile.

Add the Multiple Tile Adapter to  
access two, 2 ft. x 4 ft. ceiling tiles.

**Working Weight:**

325 lbs.

**Capacity:**

2 People Plus Tools,  
Ladder and Equipment

**Working Dimensions:**

80 in. L x 39 in. W

**Internal Dimensions:**

74 in. L x 39 in. W

**Fits through any 42" door**

Extends to 10 ft. 6 in. H

Extends higher with  
additional options.

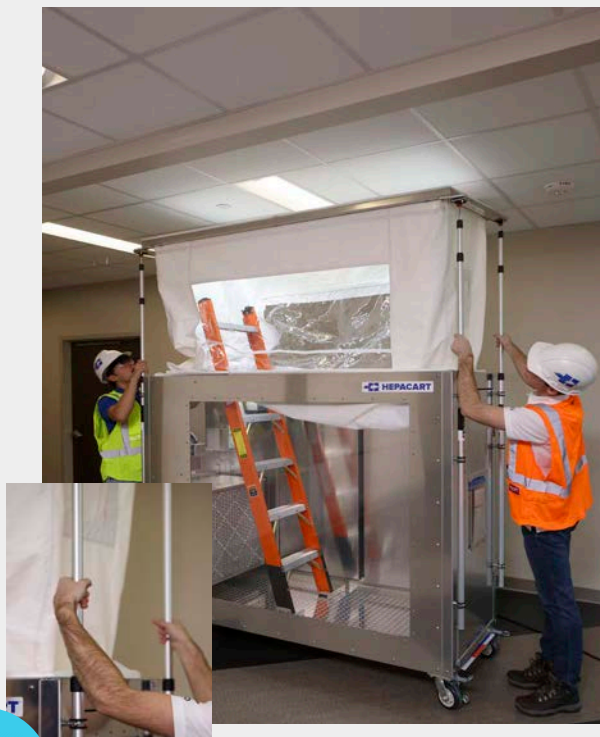
Encloses one standard  
2 ft. x 4 ft. ceiling tile.

Add the Multiple Tile Adapter to  
access two, 2 ft. x 4 ft. ceiling tiles.

**Working Weight:**

350 lbs.

## Available as a Classic and Auto-Lift



### DUSTBUGGY® CLASSIC

#### Most Versatile Raise and Lower System

Telescoping, spring-loaded extension poles for a tight seal.

Individual articulation on all four corners adjust to almost any ceiling.

No tools required.

Offsets up to 8 in. at the ceiling.

#### Exclusive: Top Slide-Out



Ideal for working around wall obstacles including handrails, art, nurse's stations, etc.

Locks into place.



### DUSTBUGGY® AUTO-LIFT

#### Unmatched Ease-of-Use

Two internal actuators adjust the enclosure individually to the desired height with the push of a button.

Allows for angle adjustment up to 45° for uneven ceilings or floors.

Easy to replace actuators with stationary motors.

Each actuator rated for 200 lbs.

No tools required.



## Upgrade Options



### TOTAL WALL ACCESS

Sliding door in the hard wall opens to provide comfortable wall access between 12" and 60".



Removable windows in the enclosure allows access to the wall area above

PART #: TWA



### LADDER EXTENSION MODULE

Reach up to 16 ft. in the ceiling with taller ladders.  
Keeps worker inside of the cart.



Collapses and folds into place for transport.

PART #: ALEM



### VISION PANELS

Available as single transparent panel often paired with wall access option.

PART #: LVP OR RVP



Available as two transparent panels for complete 360 visibility into the cart.

PART #: TVP

## Work Efficiency Accessories



### MULTIPLE TILE ADAPTER

Expands access 2x to 3x into multiple tiles while keeping the same footprint on the floor. Fits securely into the top frame of the unit.

PART #: MTA

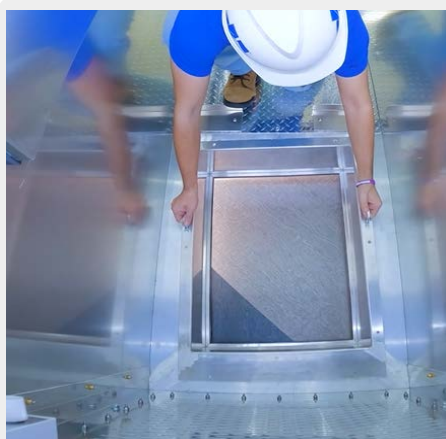


### BATTERY POWER STATION

Lithium-ion battery kit comes with power station, fast charger and exterior battery shelf. Mobile app enabled, built in surge protection,

PART #: HC-BAT-KIT-GZY1500X

## Upgrade Options



### FLOOR ACCESS KIT

Removable panel in the ceiling allows access to the floor. Includes foam sealing flange. Compatible with 74 models only.

PART #: FA74C



### DIGITAL PRESSURE MONITOR

Provides visible and audible alarms. Configurable to monitor negative or positive pressure.

PART #: HCRPM



### JOB BOX LOCKABLE TOP

Converts the cart to a lockable job box to secure items. Top swings up and pins into the top of the cart. Currently compatible with standard Classic models only.

PART #: LT

## Accessories and Consumables



### EXPORT ADAPTER

Adapter needed for external negative air machine.

PART #: EA



### TOP DUST COVER

Keeps the cart free from dust while in storage or transport

PART #: DC



### CLEAN KIT

Stores under the ladder shelf. Includes cleaning solution and microfiber towels.

PART #: HCKK



### SHELF LADDERS

Available in 6 ft., 8ft. and 10 ft. Other ladders sourced on request.

PART #: GBSL



### FULL DUST COVER

Encloses the entire cart keeping it dust and scratch free in storage or during transportation

PART #: FDC



### WALK OFF MATS

Measures 18" x 36"/ 60 pack Fits in Clean Mat tray below the door.

PART #S: CM or CMR (Mats Only)



### HEPA VACUUM

Quiet, powerful 1.25 HP motor capable of 67 CFM  
HEPA-tested 99.99% at 0.3 m

PART #: T9F287029



### ENCLOSURES

Antimicrobial, flame odor and stain resistant, anti-static and durable with no fiber shedding. Standard and Tall options.

PART #S: PTC or TPTC



### NEGATIVE AIR MACHINE

Designed for compatibility with the DUSTBUGGY® product line. 50-1000cfm.

PART #: HFAIR1100

## Enclosure Options to Add Height and Visibility



### STACKABLE MODULES

Go even higher (14+ ft.)  
Each stackable module is 2 ft.  
Securely fastens to the DUSTBUGGY®.  
For Auto-Lift models only.

PART #: SEMHC

All enclosures are antimicrobial; flame, odor and stain resistant, anti-static and durable with no fiber shedding.



### ENCLOSURE WINDOWS

Two large windows in each side.  
Window panels are removable  
for wall access.  
For standard and tall enclosures.

PART #: WAE

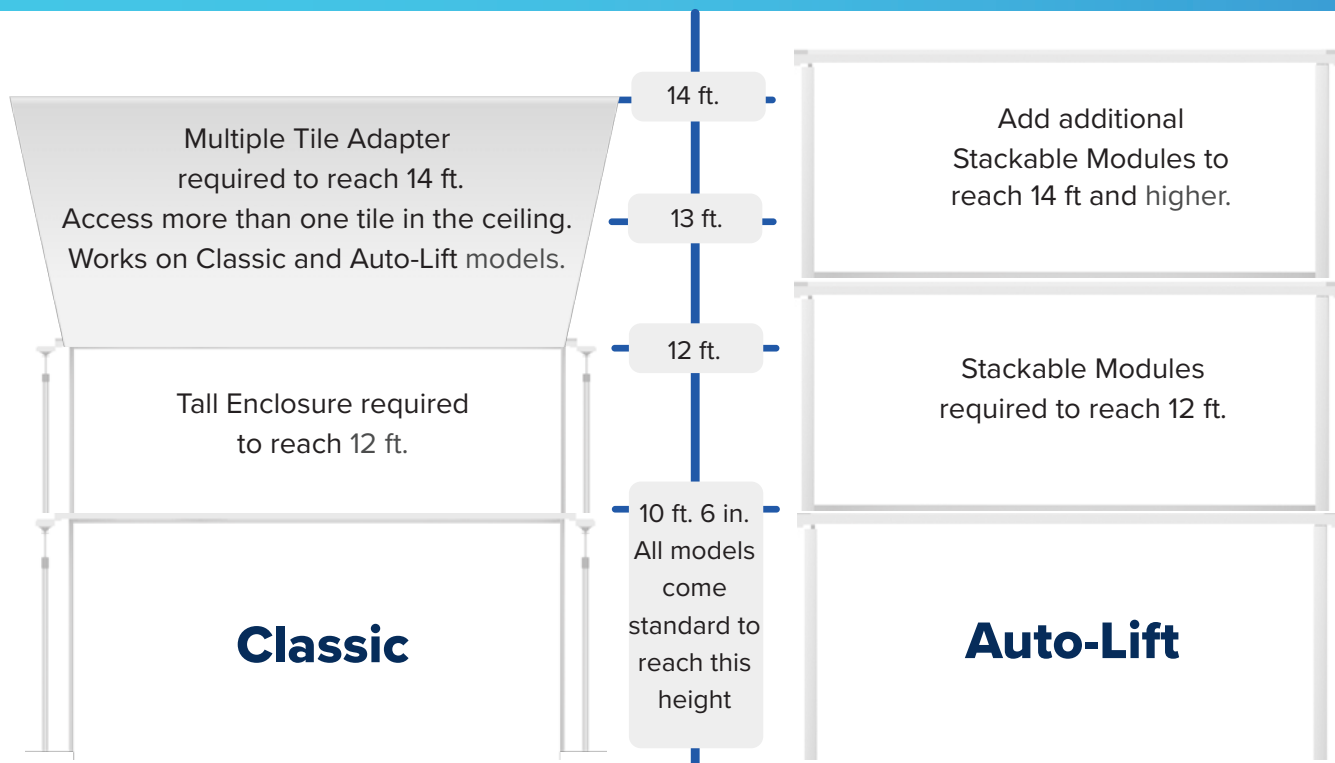


### TALL ENCLOSURES

Reaches ceilings up to 12 ft.  
Installs in minutes.  
Includes two pass-thru slips  
For Classic models only.

PART #: TPTC

## Reaching New Heights with DUSTBUGGY®



## Custom Design and Engineering Services

### Need Highly Specialized or Custom Mobile Containment?

#### Self-Contained AnteRoom

Designed for major construction company needing the air scrubber contained in the unit.



#### Extended Reach HEPACART®

Designed for major aviation technology supplier with 16 ft. ceilings and a high-risk environment where dust can damage sensitive avionics.



#### Warden Phone HEPACART®

Designed for major construction company needing to access areas for installation of warden phones at required height.



#### Dual Entry HEPACART®

Designed for international electrical contractor to allow two persons in the ceiling at once.



#### Transport HEPACART®

HEPA-filtered transport cart designed for moving and containing heater/chiller units in surgical suites.



#### Linked Unit HEPACART®

Designed for a contractor working a large piping project above ceiling. Units could be unlinked and used separately.



## International Listing Authorities



### NORTH AMERICA / JAPAN

Testing performed by Intertek.  
 Conforms to UL Standard 507 and certified to CSA STD 22.2 No.1.  
 Standard North American grounded plug.  
 20 ft. cord reel and GFCI outlets.



### AUSTRALIA / ASIA MIDDLE EAST SOUTH AMERICA

Testing performed by Intertek.  
 Conforms to CE requirements.  
 Electrical plugs and outlets configured to destination country specifications.  
 Self storing, power cord.  
 220 v AC / 50 Hz



### UNITED KINGDOM / EUROPEAN UNION

Testing performed by CE Marking Authority.  
 Conforms to UKCA and CE requirements.  
 Electrical plugs and outlets configured to destination country specifications.  
 Self storing, power cord.  
 220 v AC / 50 Hz



International model for Denmark  
 HEPACART 74 Auto-Lift

## Worldwide Distribution Network



United Kingdom / European Union



Japan



Canada



Canada



Asia



Middle East



Australia / New Zealand

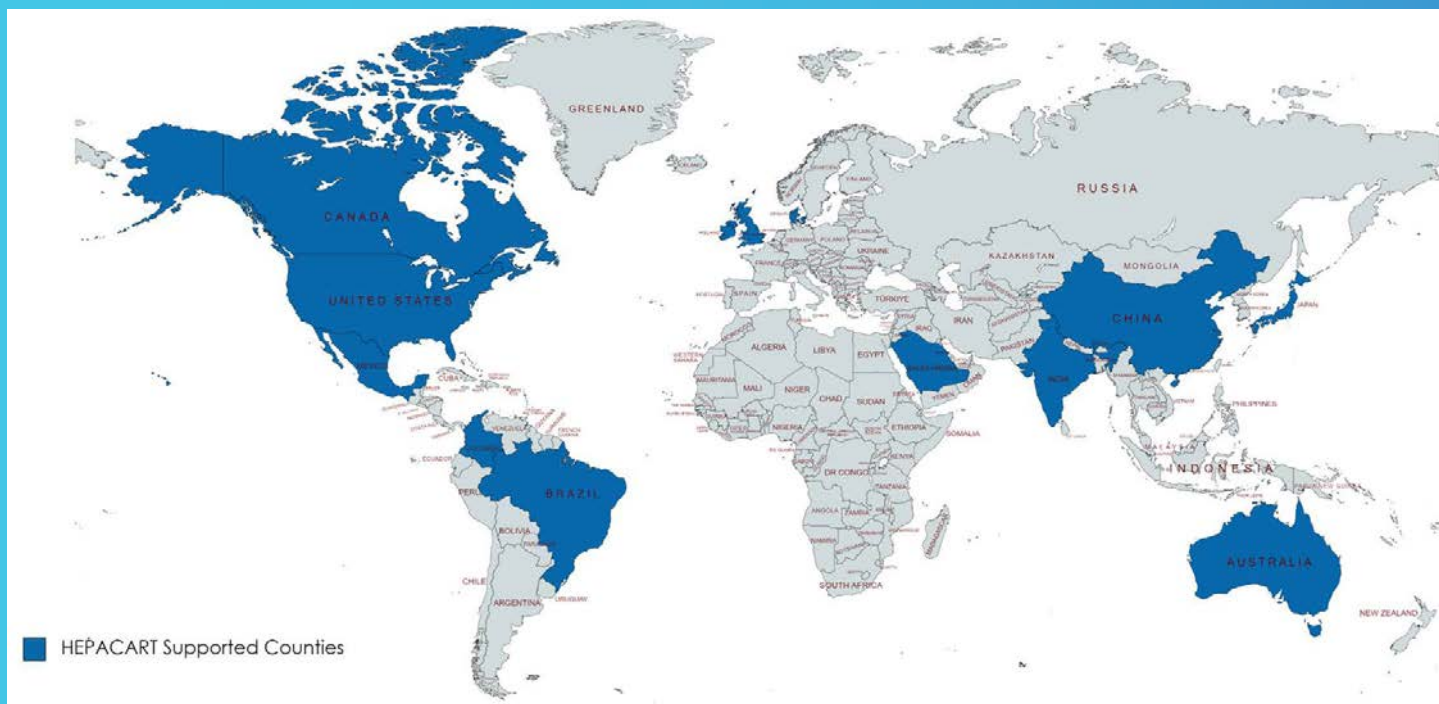


International



## Contact Us to Help You Locate a Reseller

## Trusted in Thousands of Facilities Worldwide



# DUSTBUGGY® International Sales

International HEPACARTS® have all the same Best of Class features, quality control and filter integrity testing. There are a few key differences.

## Shipping



Single units up to quantity of four are shipped in treated international crates. Larger orders require cargo containers.



## Ladder Safety

All international carts have two additional ladder clamps on the ladder shelf and two floor brackets designed to securely capture ladder feet.



CE and UKCA units feature a self-storing power cord, specific plug for the destination country. CE and UKCA units also feature specific internal outlets.



North American models and Japan feature the standard electrical configuration.



## Classic Models Guide

### DUSTBUGGY® 55 CLASSIC Models

MODEL #	CONFIGURATION
DB55C-000002	DUSTBUGGY® 55 - Classic (Base Model)
DB55C-011002	DUSTBUGGY® 55 - Classic + Right Vision + Left Vision
DB55C-000012	DUSTBUGGY® 55 - Classic + Digital Pressure Monitor
DB55C-002002	DUSTBUGGY® 55 - Classic + Wall Access
DB55C-012002	DUSTBUGGY® 55 - Classic + Left Vision + Wall Access
DB55C-000102	DUSTBUGGY® 55 - Classic + ALEM
DB55C-002102	DUSTBUGGY® 55 - Classic + Wall Access + ALEM

### DUSTBUGGY® 74 CLASSIC Models

MODEL #	CONFIGURATION
DB74C-000002	DUSTBUGGY® 74 - Classic (Base Model)
DB74C-011002	DUSTBUGGY® 74 - Classic + Left Vision + Right Vision
DB74C-000012	DUSTBUGGY® 74 - Classic + Digital Pressure Monitor
DB74C-002002	DUSTBUGGY® 74 - Classic + Wall Access
DB74C-012001	DUSTBUGGY® 74 - Classic + Left Vision + Wall Access
DB74C-000102	DUSTBUGGY® 74 - Classic- ETL + ALEM
DB74C-002102	DUSTBUGGY® 74 - Classic + Wall Access + ALEM
DB74C-002112	DUSTBUGGY® 74 - Classic + Wall Access + ALEM + Digital Pressure Monitor

### DUSTBUGGY® 74X CLASSIC Models

MODEL #	CONFIGURATION
DB7XC-000002	DUSTBUGGY® 74X - Classic (Base Model)
DB7XC-002002	DUSTBUGGY® 74X - Classic + Wall Access
DB7XC-000102	DUSTBUGGY® 74X - Classic + ALEM

## AUTO-LIFT Models Guide

### DUSTBUGGY® 55 Auto-Lift Models

MODEL #	CONFIGURATION
DB55A-000002	DUSTBUGGY® 55 - Auto-Lift (Base Model)
DB55A-011002	DUSTBUGGY® 55 - Auto-Lift + Right Vision + Left Vision
DB55A-000012	DUSTBUGGY® 55 - Auto-Lift + Digital Pressure Monitor
DB55A-002002	DUSTBUGGY® 55 - Auto-Liftc + Wall Access
DB55A012002	DUSTBUGGY® 55 - Auto-Lift + Left Vision + Wall Access
DB55A-000102	DUSTBUGGY® 55 - Auto-Lift + ALEM
DB55A-002102	DUSTBUGGY® 55 - Auto-Lift + Wall Access + ALEM

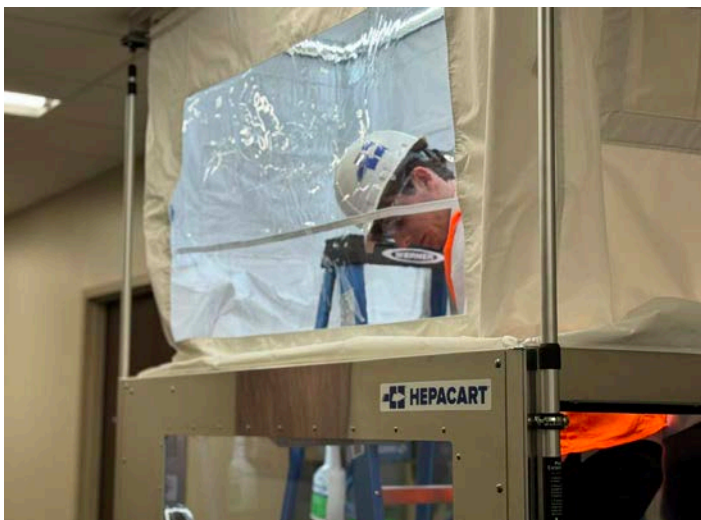
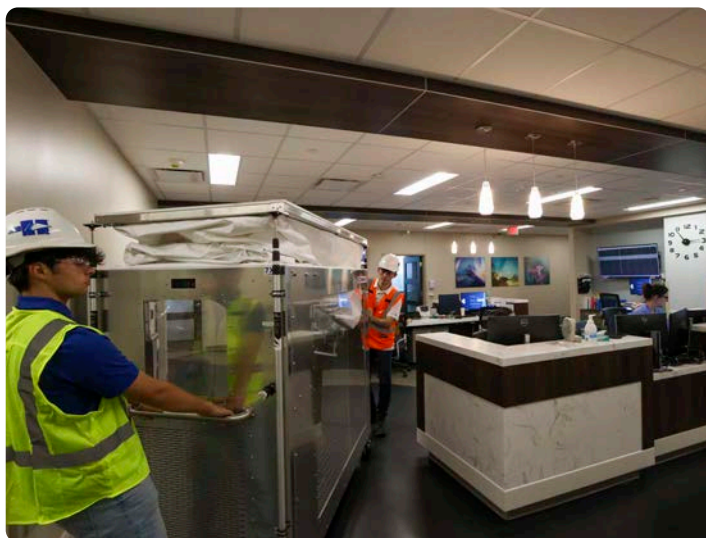
### DUSTBUGGY® 74 Auto-Lift Models

MODEL #	CONFIGURATION
DB74A000002	DUSTBUGGY® 74 - Auto-Lift (Base Model)
DB74A011002	DUSTBUGGY® 74 - Auto-Lift + Left Vision + Right Vision
DB74A-000012	DUSTBUGGY® 74 - Auto-Lift + Digital Pressure Monitor
DB74C-002002	DUSTBUGGY® 74 - Auto-Lift + Wall Access
DB74A-012001	DUSTBUGGY® 74 - Auto-Lift + Left Vision + Wall Access
DB74A-000102	DUSTBUGGY® 74 - Auto-Lift - ETL + ALEM
DB74A-002102	DUSTBUGGY® 74 - Auto-Lift + Wall Access + ALEM
DB74A-002112	DUSTBUGGY® 74 - Auto-Lift + Wall Access + ALEM + Digital Pressure Monitor

### DUSTBUGGY® 74X Auto-Lift Models

MODEL #	CONFIGURATION
DB7XA-000002	DUSTBUGGY® 74X - Auto-Lift (Base Model)
DB7XA-002002	DUSTBUGGY® 74X - Auto-Lift + Wall Access
DB7XA-000102	DUSTBUGGY® 74X - Auto-Lift + ALEM

## Photo Gallery | HEPACART® and DUSTBUGGY® In Action



PORTABLE PROTECTION

# AnteRoom Mobile Isolation

BUILT IN HEPA FILTRATION FOR  
ICRA COMPLIANCE LEVELS I-V

## Available in THREE Models, featuring Adapter Options, Upgrades and Accessories. Sets up in 5 minutes.

At HEPACART®, we strive to make equipment that provides the durability, safety and flexibility for work in a variety of containment projects. In reviewing the AnteRoom product line, choose the best size, adapter and options for your project.



### Unit Sizes

#### AnteRoom 36

Includes isolation module, and stabilizers specializing in recessed 36" doors.

#### AnteRoom 48

Larger unit and our most popular model with contractors. Natively fits 48 in. doors.

#### AnteRoom 48 DD

Added door entry space for patient bed or large equipment. Our most popular model with facilities. Natively fits 48 in. doors



### Multi-Functional

#### Renovation

Creates a temporary vestibule to keep dust in the workspace.

#### Pandemic / Surge Response

Converts a standard patient room into an isolated space.



### Options

#### Adapters:

Reducers and extenders mount to the back of the AnteRoom module to fit nearly any size door.

#### Expanders

Add depth in 1 ft. and 2 ft. increments to provide additional space for donning and doffing.

#### Wall Applications

AnteRoom can also be configured to provide containment for wall projects.

**HEALTHCARE  
FACILITIES**  
symposium and expo

## Three Time Award Winner

MOST INNOVATIVE  
PRODUCTMOST SUSTAINABLE  
NEW PRODUCT

BEST IN SHOW!

**5-Minute  
Set-Up |  
Magnetically  
Seals to  
Door Frames**

## Standard Features of Every AnteRoom



### Features

Magnetic sealing isolation module

Four integrated floor levelers.

Interchangeable flex-duct adapter and shut-off plate.



### Electrical

Available in 120 v AC for North America / Japan.

240 v. model UKCA certified for the United Kingdom

LED lighting system illuminates the AnteRoom.



Exterior electrical plug powers the LED lighting and convenience outlets.



### Durability

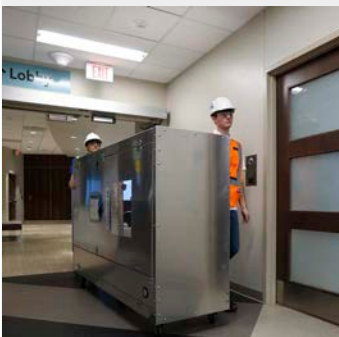
Fully-boxed aluminum frame floor.

Lightweight, unibody design. Assembled with aircraft-grade inserts and truss-head screws.

1

### Ease of Use

Moves on 4 casters.



2

Tilts up into place.



3

Slides to the doorframe.



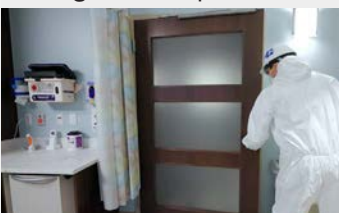
### Mobility and Convenience



Four casters for moving from project to project  
Installed magnehelic.

4

Worker completes work and exits room under negative air pressure.



5

Worker closes patient door and steps into the AnteRoom.



6

Worker closes room door, cleans the AnteRoom and themselves.



7

Worker exits the AnteRoom and closes door.



## Available in Three Base Module Sizes



**ANTEROOM 36**



**ANTEROOM 48**



**ANTEROOM 48 DD**

**Doors:**

One main hinged door  
Door opens to 34.5 in W x 81.5 in. H

**Fit:**

Natively to any 36" door.  
Add extenders for  
larger door frames.

**Working Dimensions:**

39.5" in. W x 24 in. D x 85.5 in. H

**Working Weight:**

150 lbs

**Unique Features:**

Includes two stabilizers.  
Reversible swinging door.  
Magnehelic mounted internally.

**Doors:**

One main hinged door  
Door opens to 34.5 in W x 81.5 in. H

**Fit:**

Natively to any 48" door.  
Add extenders or reducers  
to accommodate  
larger/smaller door frames.

**Working Dimensions:**

51.5 in. W x 24 in. D x 85.5 in. H

**Working Weight:**

160 lbs

**Unique Features:**

Reversible swinging door.  
Magnehelic mounted externally.

**Doors:**

One main hinged door  
One lock-in-place hinged door  
Doors open to 43 in W x 81.5 in. H

**Fit:**

Natively to any 48" door.  
Add extenders or reducers  
to accommodate  
larger/smaller door frames.

**Working Dimensions:**

51.5 in. W x 24 in. D x 85.5 in. H

**Working Weight:**

160 lbs

**Unique Features:**

Second door opening allows for  
hospital beds or larger equipment.  
Magnehelic mounted externally.

## Add Options for Any Door Frame or Project

### Fit Any Door Frame with Reducers or Expanders

**36**

#### ANTEROOM 36 ADAPTERS

Door	Frame	Adapter	Part#:
36"	40"	None	Standard Size
42"	46"	6"	HCAR3618-6E
44"	48"	8"	HCAR3618-8E
48"	52"	12"	HCAR3618-12E
52"	56"	16"	HCAR3618-16E
>80" T	All	Top	HCAR3618-TE

**48**

#### ANTEROOM 48 ADAPTERS

Door	Frame	Adapter	Part#:
36"	40"	6" (2)	HCAR4818 6RR 6LR
44"	48"	2" (2)	HCAR4818 4RR 4LR
48"	52"	None	Standard Size
52"	56"	5"	HCAR4818-5E
94" T	All	Top	HCAR4818-10HE
96" T	All	Top	HCAR4818-12HE

### Add AnteRoom Depth with Extenders


**36**

#### Size

12" Extender

Part#: HCAR3618-12EXP

24" Extender

Part# HCAR3618-24EXP

Expand for more room  
in minutes in 12" and 24  
increments.


**48**

#### Size

12" Extender

Part#: HCAR4818-12EXP

24" Extender

Part# HCAR4818-24EXP

Includes module with floor  
levelers and couplers.

### Remove or Replace Door Frames

**Portable Isolation for:  
Maintenance and  
Renovation Projects  
as Well as  
Infectious Disease  
Outbreaks**

#### FRAME ADAPTER

To remove and service door  
frames.

Removable adapter seals  
around the door frame with  
foam.

Works with AnteRoom 48  
models.

PART #: HCAR4818-DFA



## AnteRoom Upgrade Options



### KEYPAD LOCK SYSTEM

Digital programmable keypad with auto-lock and Elan levers.

PART #:HCAR-KCA



### 7-PIN LEVER LOCK SYSTEM

7-pin lock with heavy duty lever.

PART #:ARSFIC



### DIGITAL PRESSURE MONITOR

Provides visible and audible alarms. Configurable to monitor negative air pressure.

PART #:ARRPM

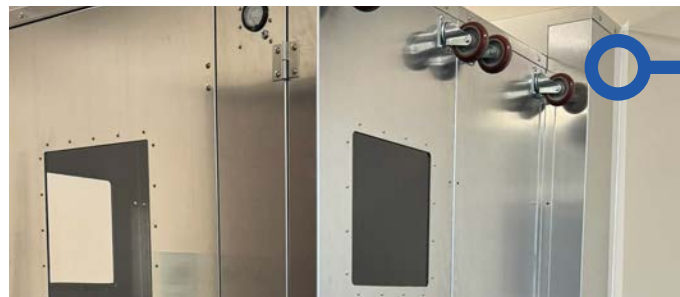


### AUTOMATIC DOOR CLOSER

Automatically closes the AnteRoom door upon entrance and exit.

PART #:ARCLOSE

## AnteRoom Works with Wall Projects



### FOAM SEAL

Wall foam kit magnetically attaches to the AnteRoom. Also works on non-magnetic door frames.

PART #: AR48-MWFK

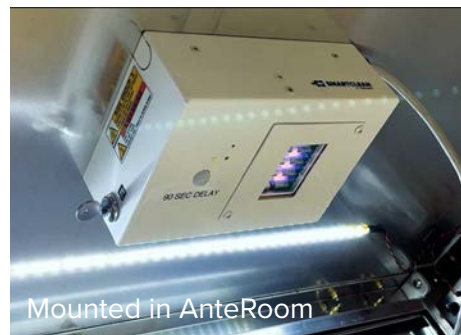
## AnteRoom Upgrade Accessories



### NEGATIVE AIR MACHINE

Designed for compatibility with the AnteRoom product line.  
 99.99% HEPA and ETL-listed.  
 Variable speed, fine-tuned air flow  
 50-1000cfm.

PART #:HFAIR1100



Mounted in AnteRoom

### UV SURFACE DISINFECTION

Continuous, safe surface disinfection.  
 Automatically deactivates when motion is detected.

PART #:UVFSC12W



### UV DISINFECTION AND DUCTING SOLUTION

One UV lamp delivers the disinfecting power to inactivate virus and bacteria on a single pass. Diffuses and disinfects the air.

PART #:FUV.ADM.USH

## ISO PACK and AnteRoom Configurations

### Infectious Disease Surge Application COVID, TB, MERS, SARS, Influenza, Measles

#### The ISO-PACK includes:

The award-winning HEPACART® AnteRoom 48  
Double Door AnteRoom

The HEPAFORCE® AIR 1100 Negative Air Machine  
with Medical Grade HEPA-Filter

The air disinfecting DUCTZONE with  
UVFORCE®  
Technology



## Configurations and Components List



**ANTEROOM**  
4 ft. W x 2 ft. D



**ANTEROOM**  
4 ft. W x 3 ft. D



**ANTEROOM**  
4 ft. W x 4 ft. D



**ANTEROOM**  
4 ft. W x 5 ft. D

Description	Part/Model #
Isolation Module	ARDD-0002
Med-Grade HEPA NAM	HFAIR1100
2x Duct Kit with Clamps	HFACC-DUCL2
DUCTZONE Module - UV	FUV.ADM.USH

Description	Part/Model #
Isolation Module	ARDD-0002
12" Extension Module	HCAR4818-12EXP
Med-Grade HEPA NAM	HFAIR1100
2x Duct Kit with Clamps	HFACC-DUCL2
DUCTZONE Module - UV	FUV.ADM.USH

Description	Part/Model #
Isolation Module	ARDD-0002
24" Extension Module	HCAR4818-24EXP
Med-Grade HEPA NAM	HFAIR1100
2x Duct Kit with Clamps	HFACC-DUCL2
DUCTZONE Module - UV	FUV.ADM.USH

Description	Part/Model #
Isolation Module	ARDD-0002
12" Extension Module	HCAR4818-12EXP
24" Extension Module	HCAR4818-24EXP
Med-Grade HEPA NAM	HFAIR1100
2x Duct Kit with Clamps	HFACC-DUCL2
DUCTZONE Module - UV	FUV.ADM.USH

# AnteRoom Models Guide



## ANTEROOM 36 Models

SKU	CONFIGURATION
AR36-0001	AnteRoom 36 (Base Model)
AR36-0201	AnteRoom 36 with Lever Handle
AR36-0101	AnteRoom 36 with Keypad Lock

## ANTEROOM 48 Models



SKU	CONFIGURATION
AR48-0002	AnteRoom 48 (Base Model)
AR-0202	AnteRoom 48 with Lever Handle
AR-0102	AnteRoom 48 with Keypad Lock
AR-0012	AnteRoom 48 with Digital Pressure Monitor
AR48-0212	AnteRoom 48 with Lever Handle + Digital Pressure Monitor
AR48-0112	AnteRoom 48 with Keypad Lock + Digital Pressure Monitor

## ANTEROOM 48 Models

SKU	CONFIGURATION
AR48DD0002	AnteRoom Double Door (Base Model)
ARDD-0202	AnteRoom Double Door with Lever Handle
ARDD-0102	AnteRoom Double Door with Keypad Lock
ARDD-0012	AnteRoom Double Door with Digital Pressure Monitor
AR48DD-0212	AnteRoom Double Door with Lever Handle + Digital Pressure Monitor
AR48DD-0112	AnteRoom Double Door with Keypad Lock + Digital Pressure Monitor



## Photo Gallery | AnteRoom In Action



TESTED AND CERTIFIED BUILT IN HEPA

# HEPAFORCE® Air Scrubbers and Diffusers

FOR ICRA COMPLIANCE LEVELS I-IV

## Available in Three Product Lines to Move More Air, Move it Quieter and at 1/2 the Cost

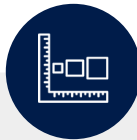
The HEPAFORCE® AIR line of commercial grade air scrubbers and negative air machines are built with the same quality as a HEPACART®. The units are rugged, move easily, require little maintenance and highly effective and efficient in continually eliminating dust and pathogens from the environment.



### Tested and Certified

Every unit is tested and verified to HEPA standards 99.99% at .3 microns.

ETL, CE and UKCA listed.



### Two Sizes

#### AIR 1100

Exhausts up to 1000 cfm

#### AIR 2100

Exhausts up to 1700 cfm



### Components and Accessories

Air diffusers and  
air disinfectors

Ports, ducts and covers.



# HEPAFORCE® AIR Series | Scrub, Diffuse and Duct



## AIR 1100

### Working Dimensions:

35.25 in. L x 24.5 in. W x 20.5 in. H

### Variable Air Speed

50-1000 cfm

### Working Weight:

80 lbs.

MODEL: HFAIR1100



## AIR 2100S

### Working Dimensions:

42 in. L x 31 in. W x 27.5 in. H

### Variable Air Speed

50-1700 cfm

### Working Weight:

120 lbs.

MODEL: HFAIR2100S



## DUCTZONE

### Working Dimensions:

26.35 in. L x 20.12 in. W x 16.6 in. H

Safe and convenient alternative to ducting with single pass inactivation of pathogens.

Shown below ducting air from an AIR 1100.

### Technology:

One 18" Far-UVC (222nm), 300 watt lamp delivers the disinfecting power to inactivate viruses and bacteria in a single pass.



## WHISPERCLEAN COMPACT

### Working Dimensions:

26.5 in. L x 26.5 in. W x 24in. H

Gently HEPA-filters and diffuses the air from air scrubbers for safe and easier alternative to ducting.



### Working Weight:

41lbs.

MODEL: WCD-C



### Working Weight:

40 lbs.

MODEL: FUV.ADM.US

## Standard Features HEPAFORCE® AIR Series



### Filtration

HEPA-Filter: 99.99% exceeds ASHRAE 52.2 MERV 16 ratings.  
MERV-8 pleated pre-filter protects the HEPA.



HEPA filter mounted post-fan for superior particle reduction.  
Each filter tested per IEST standards:  
Air flow IEST-RP-C001.



### Fan Motor

50,000 hour life expectancy = years of continuous use.  
Uses up to 88% less energy  
Precision tuned, variable speed, air volume control.



1,000 CFM on AIR 1100  
1,700 CFM on AIR 2100  
Quieter than competing models.  
42-point quality inspection.



### Convenience

Indicator lights for filter changes.



Easy HEPA and pre-filter changes.



Easy tilt and wheel move from location to location.  
Integrated control panel with Standard integral 12-inch port.



### Durability

Same build quality as the flagship HEPACART®  
Made of commercial grade aluminum and high impact ABS plastic.

Assembled with blind self-sealing rivets.  
Heavy-duty casters and handles for moving.



### Electrical

US 120 v AC  
50/60 Hz | 6-12 Amps  
240 v AC version complies with CE and UKCA guidelines.



Self-storing commercial grade power cord.



# HEPAFORCE® AIR Series Accessories and Consumables



## HEPA FILTERS

99.99% MEDICAL GRADE  
HEPA

AIR 1100:  
18 in. x 18 in. x 12 in.

PART #: AIR11.HF181812

AIR 2100:  
24 in. x 24 in. x 12 in.

PART #: AIR21.HF242412



## PRE FILTERS

MERV 8 high-velocity  
Case of 12

AIR 1100:  
18 in. x 18 in. x 2 in.

PART #: AIR11.PF181802

AIR 2100:  
24 in. x 24 in. x 2 in.

PART #: AIR21.PF242402



## DUCT KIT

25 ft. duct, 2 clamps  
Three-layer ducting  
Steel wire reinforcement

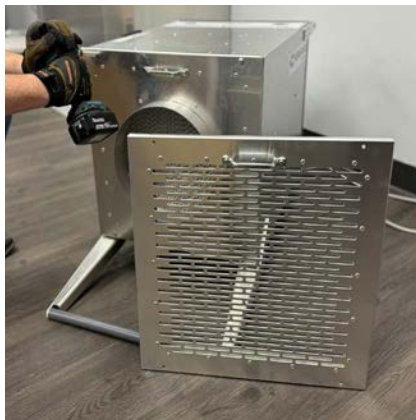
PART #: HFACC-DUCL2



## DUCT PORT

Used to port air from  
the AIR 2100S.

PART #: AIR21.PORT-12



## EXHAUST GRILL

Convert the AIR 1100 to a  
continuous air scrubber.

PART #: AIR11.SCB



## DUST COVERS

Protects the HEPAFORCE®  
Air Units when not in service.

PART #: HFAIR1100.DC  
HFAIR2100.DC



MAXIMUM PERFORMANCE

# OMNIAIRE® Air Scrubbers

FOR ICRA COMPLIANCE LEVELS I-V



## Featuring Two Sizes to Complete our Negative Air Machine Offering.

The OMNIAIRE® line of commercial-grade air scrubbers and negative air machines are used during renovation and abatement projects and for purifying air in commercial, factory sites and medical facilities.. The units are rugged, move easily, require little maintenance and highly effective and efficient in continually eliminating dust and pathogens from the environment.



### Sealed HEPA Filter

100% of the air pulled thru the Omniaire portable HEPA filtration machine must travel through the HEPA-filter itself.

Our systems are designed to ensure every bit of airflow is properly filtered.



### Two Sizes

#### OMNIAIRE 600 NITRO

Exhausts up to 600 TrueCFM®

#### OMNIAIRE 2500 PRO

Exhausts up to 2500 TrueCFM®



### TrueCFM®

Every unit is tested and verified to HEPA standards 99.99% at .3 microns.

ETL and CE listed.



**OMNIAIRE**

## Nitro 600 Standard Features



### NITRO 600

**Working Dimensions:**

25 in. L x 19 in. W x 19 in. H

**Variable Air Speed**

200-600 cfm

**Working Weight:**

36 lbs.

PART #: OA600NHAZ-001


**Filtration**

HEPA Filter 99.99%  
0.3 microns

MERV 9 primary pre-filter

Optional: OdorGuard 600  
carbon web filter


**Convenience**

Recessed controls with  
red power indicator light and  
amber change filter light


**Electrical**

115 VAC 60 Hz 2.4-Amp

Power cord

GFCI protected outlet

8 amp load max  
with 12-amp breaker


**Durability**

Polyethylene housing with  
10" inlet/outlet and  
soft rubber handle


**Fan Motor**

Motorized impeller fan  
with thermal overload.

Variable speed


**Stackable**

Stack up to three units  
high and pair them together  
through the GFCI  
protected outlet.



# OMNIAIRE 2500 PRO Standard Features



## PRO 2500

**Working Dimensions:**  
31 in. L x 36 in. W x 228 in. H

**Variable Air Speed**  
1200 to 2500 cfm

**Working Weight:**  
114 lbs.

MODEL:OA2500 PRO



### Filtration

#### TrueCFM®

Metal frame, high velocity  
HEPA Filter 99.99%  
0.3 microns

MERV 8 pleated pre-filter



### Convenience

Store-flat handles  
facilitate safe  
2-person lift of the unit

Integrated exhaust duct

HEPA filter replacement  
indicator

Easy to sanitize  
aluminum housing



### Electrical

UL/CSA safety certified

115 VAC 60 Hz 12 Amp

10 ft. Power cord with  
built-in circuit breaker



### Durability

Aircraft grade  
aluminum housing

Industrial grade casters





### HEPA FILTER

99.99% Medical  
Grade HEPA

NITRO 600  
15 in. x 15 in. x 6 in.

PART #: OAH1515-50



### PRE FILTERS

MERV 8 high-velocity  
Case of 20 for  
NITRO 600  
and 2500 PRO

PART #: OAP1818



### CARBON FILTERS

OG161 OdorGuard 600  
carbon filter pad.

16 in. x 16 in. x 2 in.

PART #: OG1616



### HEPA FILTER

99.99% Medical  
Grade HEPA

2500 PRO:  
24 in. x 24 in. x 12 in.

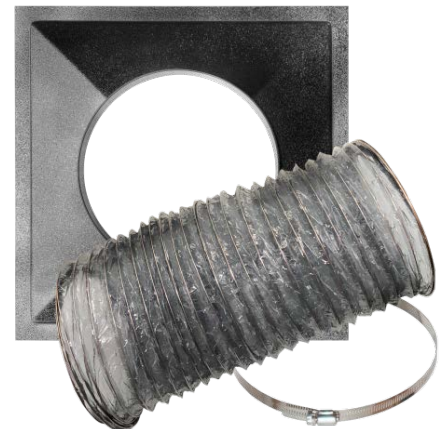
PART #: OAH2424-50



### FLEX DUCTING

Replacement ducting for the flex  
manifold.

PART #: OAD12



### FLEX DUCT MANIFOLD

Used to Port air from  
the NITRO 600 or 2500 PRO

Includes intake manifold,  
ducting and clamp.

PART #: OAIM2200-12KIT

CONTINUOUS ROOM DISINFECTION

# GERMBUSTER Air Cleaner

COMMERCIAL GRADE HEPA



## Scrubs Air Quieter at Half the Cost of Competing Products. Available in Two Models.

The GERMBUSTER line of commercial grade air cleaners is built with the same quality as a HEPACART®. It is rugged, simple to operate, requires little maintenance and highly effective in continually reducing the viral load in the environment.



### Two Models

#### GERMBUSTER 300

Continuous air cleansing via commercial grade air filtration for everyday use in high-traffic areas.

#### GERMBUSTER FAR-UV

Continuous air cleansing via commercial-grade air filtration and FAR-UV disinfection for the most critical air-quality environments.



### Many Applications

Hospital suites  
Waiting areas  
Dentist offices  
Conference rooms  
Common areas  
Laboratories  
Classrooms  
Nurses Offices  
Assisted Living  
Apartments  
Residential  
Casinos VIP Rooms



### Energy Savings

Both models feature an energy-efficient, high-performance fan featuring an ECM (Electronically Commutated Motor) requires up to 88% LESS energy.

Result:  
Lower cost of use

**GERMBUSTER  
looks great  
in any  
environment**



## Gerbuster Commercial Air Purifier

## Consumables



### GERMBUSTER 300

### GERMBUSTER UV

#### Working Dimensions:

16 in. L x 16 in. W x 25 in. H

#### Variable Air Speed

up to 330 cfm

#### Working Weight:

50 lbs.

MODEL: HFGB300

#### Working Dimensions:

16 in. L x 16 in. W x 32 in. H

#### Variable Air Speed

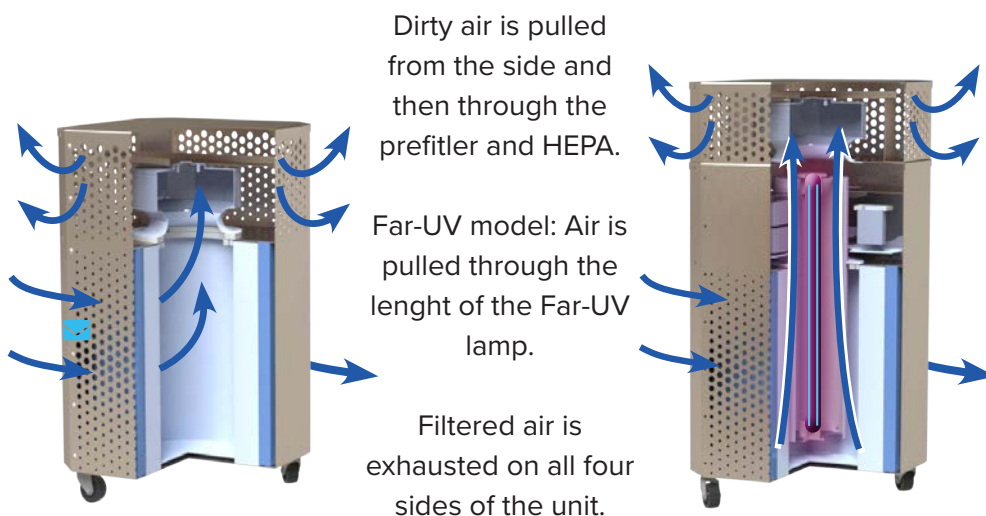
up to 330 cfm

#### Working Weight:

68 lbs.

MODEL: HFGBRFUV

## How it Works



### HEPA FILTERS

Round, aluminum framed  
99.97% HEPA filter.

PART #: FUV-GB.HF



### PRE FILTERS

Mesh pre-filters wrap  
the HEPA-filter.

MODEL: HFGBR.PPF

### LAMP

18" CARE  
222 lamp

3,000 hour  
lifetime



MODEL: FUV-ADM.RLMP.USH

## GERMBUSTER Features



### Filtration

HEPA-Filter: 99.97% exceeds  
ASHRAE 52.2 MERV 16 ratings

MERV-7 pleated pre-filter  
protects the HEPA

Each filter tested per  
IEST standards:  
Air flow IEST-RP-C001.

Easy HEPA and  
pre-filter changes.



### Fan Motor

ECM fan motor uses  
up to 88% less energy

50,000 hour life expectancy =  
years of continuous use.

Quieter than competing models.  
42-point quality inspection.

Precision-tuned, variable speed  
air volume control for  
GERMBUSTER 300 and  
optimal 1-speed setting f  
or GERMBUSTER Far-UV.



### State of the Art UV Technology

GERMBUSTER with FAR-UV  
includes one lamp with  
3,000-hour lifetime.

300-watt power supply.

Provides disinfection of air  
in a single pass.

High reflectivity lamp tube  
for maximum exposure.

FAR-UV lamp sight glass.



### Convenience

Easy to move.

Simple operation.

Child-proof filter cabinet.



### Build Quality

Same build quality as  
the flagship HEPACART®

Constructed out of  
commercial grade  
stainless steel and  
blind self-sealing rivets.

Unit moves on  
heavy-duty casters.

Looks professional in  
in any environment.

Easy to clean and maintains  
appearance with  
no discoloration from  
daily cleanings.



### Electrical

US 120 v AC  
50/60 Hz | 6-12 Amps

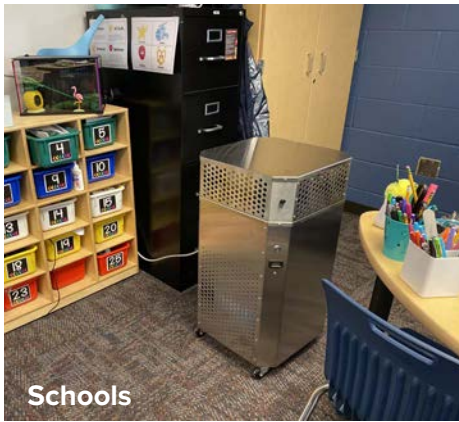


Self-storing 8 ft. commercial  
grade power cord.

## Applications



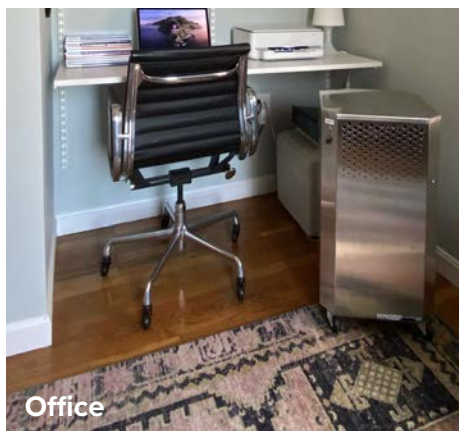
Hospitals and Clinics



Schools



Assisted Living



Office

## GERMBUSTER FAR-UV EFFICACY

### GERMBUSTER EFFICACY AT DOSES OF 222-NM FAR-UVC LIGHT AT 330 CFM

To estimate effective Far-UVC dosing with the GERMUSTER FAR-UV, we have measured the lamp intensity as installed and calculated the average dose achieved on the airstream.

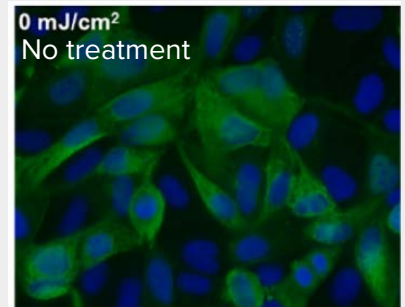
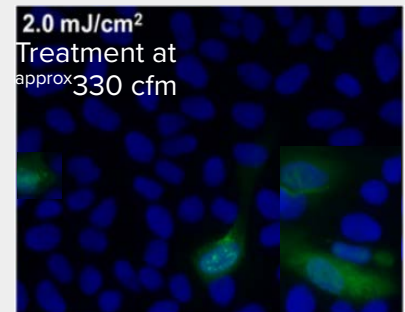
This data is then compared with the published data for air disinfection using Far-UV to provide a relative estimate for Far-UV cleaning of the air.

Typical fluorescent images of MDCK epithelial cells infected with influenza A virus (H1N1). The viruses were exposed in an aerosolized form in the irradiation chamber to doses of 0, 0.8, 1.3 or 2.0 mJ/cm<sup>2</sup> of 222-nm far-UVC.

Infected cells fluorescent green (blue=nuclear stain DAPI; green=Alexa Fluor-488 conjugated to anti-influenza A antibody). Images taken with 40× objective.

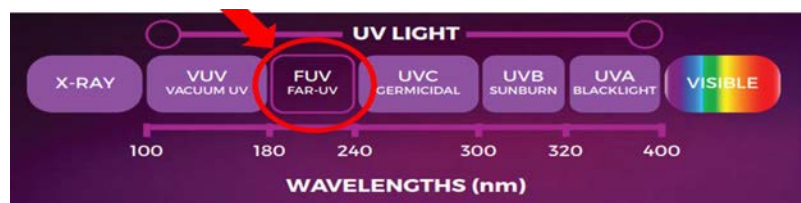
For the GERMUSTER FAR-UV per air exchange at:

- 330 cfm the unit achieves 1.51 mJ/cm<sup>2</sup>



## Advantages of FAR-UV

- Much safer for human skin and eyes
- Applications for human occupied areas
- Better against spores and preventing re-growth
- Strong and effective germicidal properties
- Eco-friendly lamps with no mercury
- No warm up time with instant on/off



TESTED AND CERTIFIED BUILT-IN HEPA

# WHISPERCLEAN® Air Scrubbers and Diffusers

BUILT IN DIFFUSION AND HEPA FILTRATION  
FOR ICRA COMPLIANCE LEVELS I-V



## Available in Two Sizes, Eliminates Ducting and Adds a Secondary Level of HEPA Filtration.

The WHISPERCLEAN® line of commercial-grade air diffusers are designed to eliminate the costs and time of ducting filtered air through long series of ductworks. They are rugged and require little maintenance and highly effective in diffusing the airflow to a safe and manageable level.



### Two Sizes

Choose the best size  
for your filtration  
and diffusion needs:

#### WHISPERCLEAN® COMPACT®

Diffuses air volumes  
up to 1111 cfm.

#### WHISPERCLEAN® FULL SIZE

Diffuses air volumes  
up to 2256 cfm.

Used downstream from  
a negative air machine.



### Save Time and Money

Eliminates the need to duct  
air over long distances  
and out of the space.

Safe alternative to ducting.



## WHISPERCLEAN® HEPA Air Diffuser

## Filters



### COMPACT HEPA

99.99% HEPA Filter

MODEL: WCD-CFH

### WhisperClean® Compact

#### Working Dimensions:

26.5 in. L x 26.5 in. W x 24 in. T

#### Air Volume Rating

500 to 1111 cfm

#### Working Weight:

41 lbs.

#### Duct Diameter

10 in.

MODEL: WCD-C

### WhisperClean® Full

#### Working Dimensions:

41 in. L x 27 in. W x 24 in. T

#### Air Volume Rating

1000- 2256 cfm

#### Working Weight:

70 lbs.

#### Duct Diameter

12 in.

MODEL: WCD2K



### FULL SIZE HEPA

99.99% HEPA-Filter

MODEL: WCD2KFH



## WHISPERCLEAN® Features



### Filtration and Diffusion

Provides a major diffusion of airflow across the HEPA-filter.

HEPA-Filter: 99.99% exceeds ASHRAE 52.2 ratings at max air volume rating.

Every WhisperClean is factory tested for filter integrity and comes with a 1-year certification for HEPA performance.

Minimizes sending dust airborne by the NAM exhaust.



### Cost Efficient

Gently HEPA-filters and diffuses the air from air scrubbers for safe and easier alternative to ducting.

Reduces labor and project staging time.

Eliminates rigging and degraded CFM.

Secondary filtration for Improved efficacy for infection control and mitigation.

Designed to lessen wear and tear on negative air machines caused by exceeding static pressure recommendations.



### Convenience

Full-size unit moves on two casters while the Compact unit is easily carried to and from the project with the top handle.

Built-in pressure tube for easy pressure testing with a manometer.



### Build Quality

Durable medium-density Polyethylene body holds up to the rigors of construction.



# WhisperClean® Application Use

## How it Works

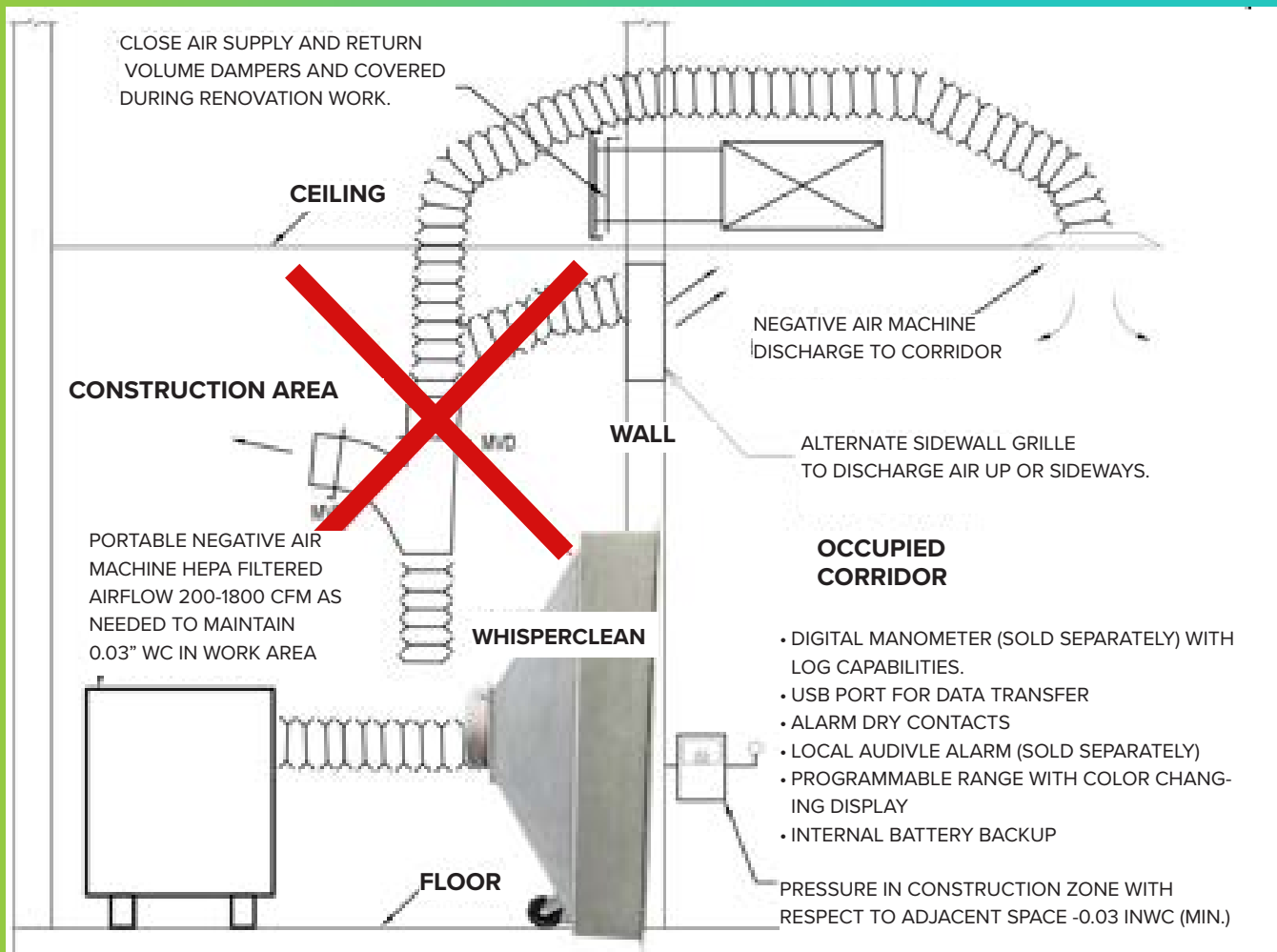
The WhisperClean® HEPA Air Diffuser is a HEPA cabinet engineered to be paired downstream of a negative air machine during remediation of microbial and other hazardous materials encountered in the restoration field when an exhaust route to the building's exterior is not an option.

The diffuser provides a secondary level safeguard for exhausting the negative air machine to adjacent space. It delivers optimum Air Changes Per Hour (ACH) and manages large volume project exhaust when maintaining negative pressure in containment projects.

The WhisperClean® HEPA Air Diffuser sets a new standard of efficacy for infection control in protected environments and risk mitigation.



## WhisperClean® Replaces Ducting



# FAR UV DISINFECTION DUCTZONE Air Disinfection Module

ICRA COMPLIANCE LEVELS I-V



## One Pass Disinfection of Air Plus Diffusion Creates a Safe Alternative to Ducting.

The DUCTZONE Air Disinfection Module is a commercial-grade UV disinfection and diffusing module that sits downstream from a negative air machine. The DUCTZONE is built with the same quality as a HEPACART® and is used in high risk environments as a secondary protection against pathogens.



### State-of-the-Art UV Technology

Single pass air  
cleansing via  
commercial grade  
ducting alternative  
for the most critical of  
environmental needs.

#### Effective on viruses including:

- Covid
- Tuberculosis
- Measles
- Influenza
- Common Cold



### Portable Single Size Unit

Placed downstream  
from the HEPA-filtered  
negative air machine.

Exhausted air from a  
negative air machine is  
ported through the 12'  
duct and along  
the UV-lamp before  
being diffused.

Effectively handles  
air velocity up to  
500 cfm with  
increase efficacy  
at lower air speeds.



### Used in High-Risk Areas

When secondary measures are required in  
the most critical areas, the DuctZone is  
a convenient and highly effective solution.

## DUCTZONE Disinfects, Diffuses and Ducts

### One Pass Air Disinfection with FAR-UV Technology



**DUCTZONE** **FAR UV**

#### Working Dimensions:

26.5 in. L x 20.12 in. W x 16.6 in. H

#### Technology

Far-UVC lamp

#### Working Weight:

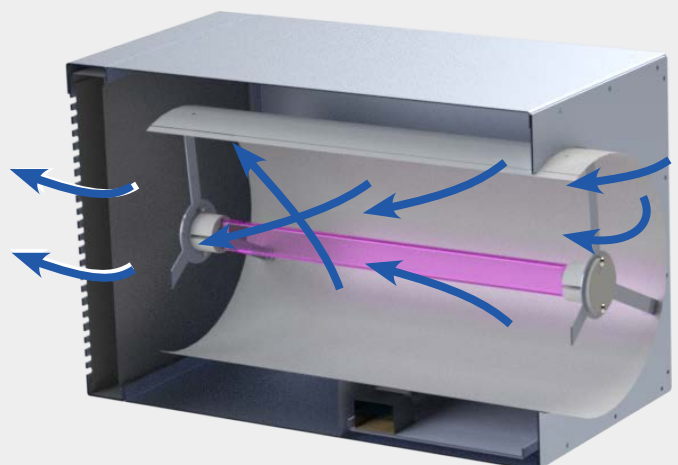
40 lbs.

MODEL: FUV.ADM.USH



## How it Works

1. Filtered air from the negative air machine is pushed through the unit at speeds  $\geq 500$  cfm.
2. Air is funneled into the tube in close proximity and along the length of the Far-UVC lamp.
3. As the air travels near the lamp, pathogens are inactivated through UV exposure.
4. Treated air is then exhausted and diffused through an additional filter.



## DUCTZONE FEATURES



### State of the Art Technology

Includes 18" Far-UVC mercury-free lamp and 300-watt power supply with instant-on effectiveness.

Lamp effectiveness is not affected by heat/cold or humidity.

Delivers the necessary exposure up to 500 cfm to inactivate many of the most common pathogens

Far-UVC is absorbed at higher levels for DNA and other proteins

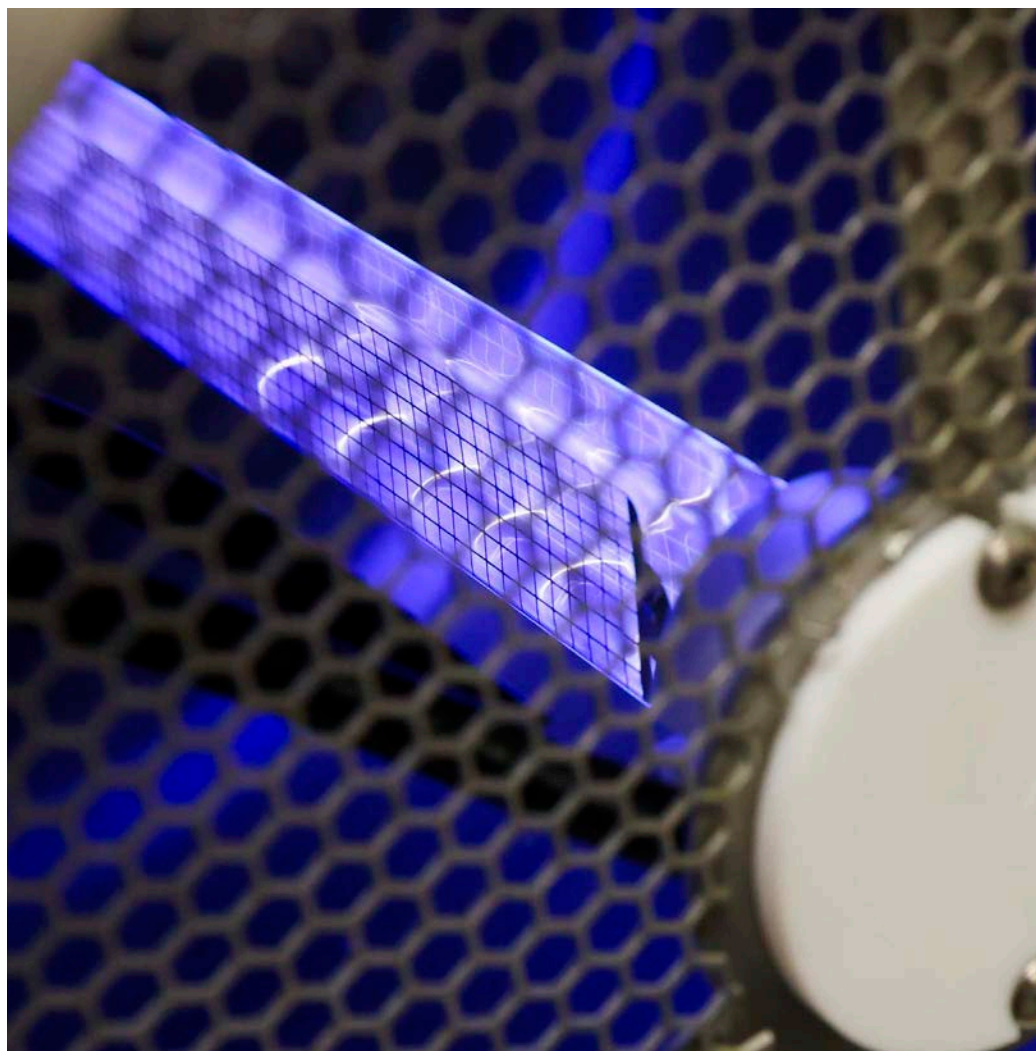


### Convenience

Includes 8 ft. power cord.



Simple operation with integrated controls and hours meter.



### Build Quality

Crafted with the same premium quality as the flagship HEPACART®

Assembled with blind self-sealing rivets

Looks professional in any environment

Easy to clean and maintains appearance through daily cleanings



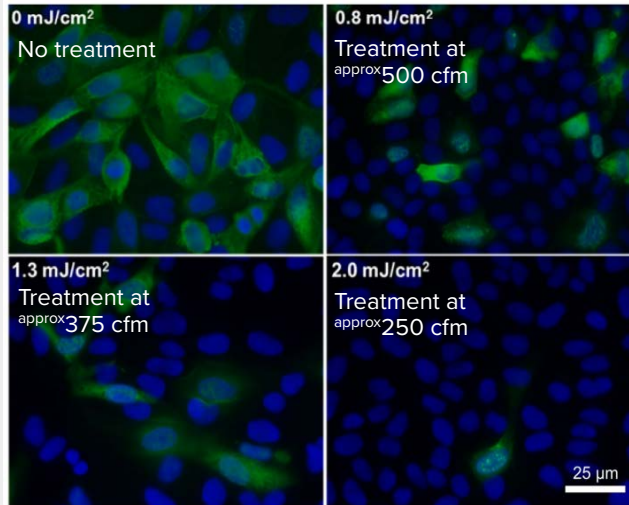
## DUCTZONE FAR-UV Efficacy

### AIRSPEED AND EFFICACY AT DIFFERENT DOSES OF 222-NM FAR-UVC LIGHT

To estimate effective Far-UVC dosing with the DuctZone Air Disinfection Module, we have measured the lamp intensity as installed and calculated the average dose achieved on the airstream.

This data is then compared with the published data for air disinfection using Far-UV to provide a relative estimate for Far-UV cleaning of the air.

Typical fluorescent images of MDCK epithelial cells infected with influenza A virus (H1N1). The viruses were exposed in



aerosolized form in the irradiation chamber to doses of 0, 0.8, 1.3 or 2.0 mJ/cm² of 222-nm Far-UVC. Infected cells fluorescent green

**For the DuctZone ADM per exchange at:**

- 500 cfm the unit achieves 0.87 mJ/cm²
- 375 cfm the unit achieves 1.26 mJ/cm²
- 250 cfm the unit achieves 1.89 mJ/cm²

(blue=nuclear stain DAPI; green=Alexa Fluor-488 conjugated to anti-influenza A antibody). Images taken with 40× objective.

**Single-pass air cleansing for Covid, influenza, measles, tuberculosis and other airborne pathogens.**

## Advantages of FAR-UV

- Much safer for human skin and eyes
- Applications for human occupied areas
- Better against spores and preventing re-growth
- Strong and effective germicidal properties
- Eco-friendly lamps with no mercury
- No warm up time with instant on/off



ABOVE CEILING INSTALLATION PROTECTION

# CAP [CABLING ACCESS POINT]

US PATENT #: 8,397,451

## Save Time, Protect the Cable and Grid with CAP Above-Ceiling Productivity Tools in 7 models

At HEPACART®, we strive to make equipment that provides durability, safety and flexibility for work in a variety of containment projects.

Choose the best CAP [Cabling Access Point] for your project from our extensive product line.



### Grid Size

All CAP models will fit in a 2 ft. x 4 ft. ceiling grid with the addition of the CAP Extension.

The CAP Access fits natively into a 2 ft. x 4 ft. ceiling grid.

**Reduces the  
labor and  
expense  
involved with  
pulling wire  
and cable.**



### Specialties

#### CAP Classic

For all purpose work

#### CAP Vision

See the pull above-ceiling

#### CAP Fiber

For sensitive fiber pulling

#### CAP Conduit

For flexible conduit pulling

#### CAP Bundle

For the biggest pulls

#### CAP Access

Perfect for data closets

#### CAP Corner

Assists with the turn

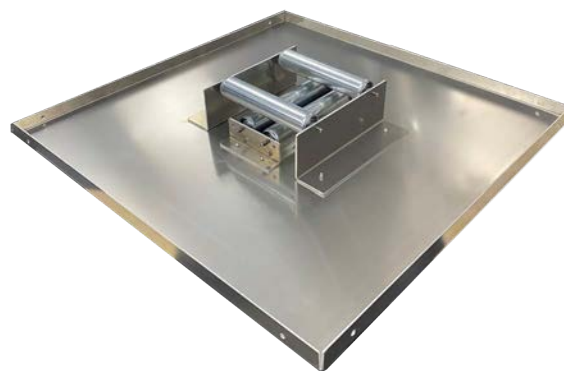
#### CAP Extension

Fills the 2 ft. x 2 ft. space.



### View from Below

Each CAP lays flat in the ceiling grid. Cable and wire then are pulled through the different sizes of protected openings.



### View from In-Ceiling

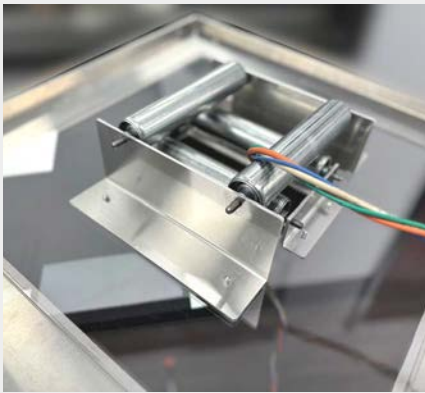
2 sets of rollers help guide the wire and cable being pulled in any direction. Cable and wire move across these rollers smoothly.

## CAP [Cabling Access Point] Features



### Convenience

Each CAP model has an access opening with rollers on the back to decrease friction and guide the wire through the ceiling.



Simple installation involves laying the CAP flat in the grid ceiling or securing the CAP to the building structure using the holes at each corner.



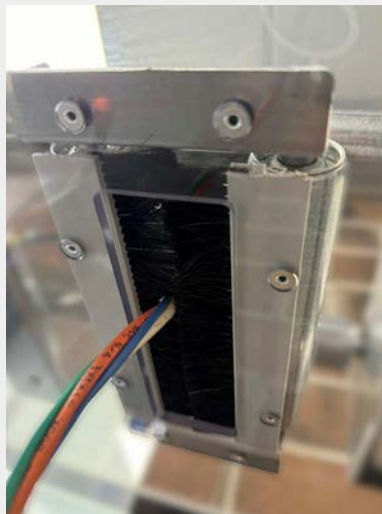
### Protection

The CAP protects the grid and cable during cable pulling and installation.

Protecting the cable reduces the likelihood of faulty installations.



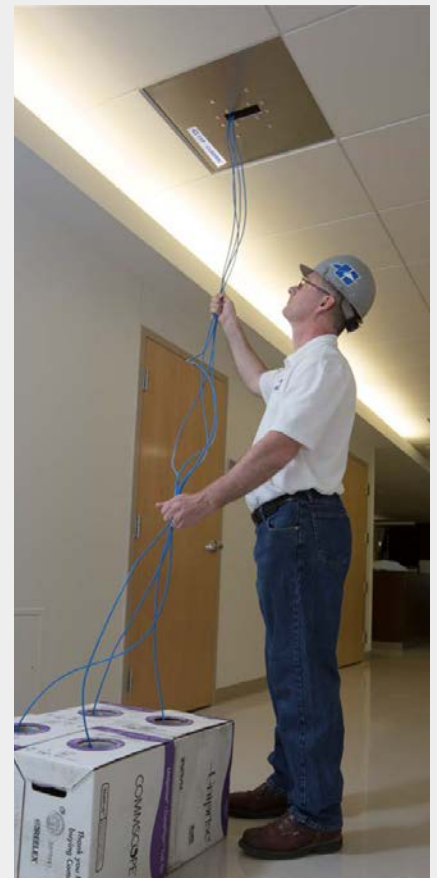
Each CAP opening is protected by horsehair bristles which keep dust, dirt and debris from falling into the space below.



### Productivity

Use of the CAP system saves labor hours as the productivity tool requires using fewer installers and speeds up cable installation.

Trusted by thousands of electrical and low voltage installers around the world.



## CAP [Cabling Access Point] Models



Designed for  
small or mid-size  
cable bundles

### CAP CLASSIC

**Working Dimensions:**

24 in. L x 24 in. W

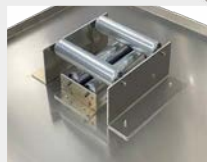
**Working Weight:**

8 lbs.

**Cable Opening:**

2 in. x 6 in.

MODEL: CAP



Same as the  
Classic but with  
clear window

### CAP VISION

**Working Dimensions:**

24 in. L x 24 in. W

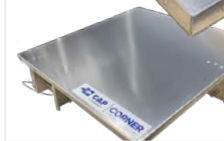
**Working Weight:**

9 lbs.

**Cable Opening:**

2 in. x 6 in.

MODEL: CAP-W



Changes  
direction of  
the cable to  
make a corner

### CAP CORNER

**Working Dimensions:**

24 in. L x 24 in. W

**Working Weight:**

10 lbs.

**Special Feature:**

Slide-out pins for easy cable removal

MODEL: CAP-C



Designed for  
sensitive fiber  
optic cables

### CAP FIBER

**Working Dimensions:**

24 in. L x 24 in. W

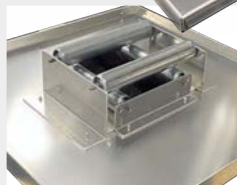
**Working Weight:**

13 lbs.

**Cable Opening:**

2 in. x 20 in.

MODEL: CAP-L



Designed for  
flexible conduit  
pulls

### CAP CONDUIT

**Working Dimensions:**

24 in. L x 24 in. W

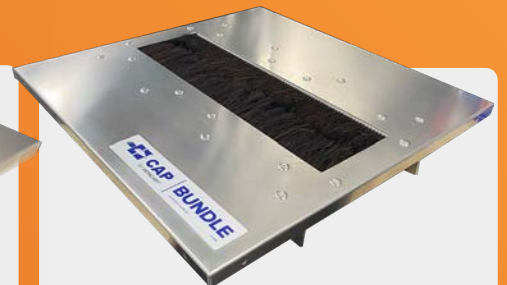
**Working Weight:**

10 lbs.

**Cable Opening:**

6 in. x 6 in.

MODEL: CAP66



Designed for  
large cable or  
conduit pulls

### CAP BUNDLE

**Working Dimensions:**

24 in. L x 24 in. W

**Working Weight:**

14 lbs.

**Cable Opening:**

6 in. x 20 in.

MODEL: CAP206

# CAP [Cabling Access Point] Installation



Monitor cable as  
its pulled into the  
ceiling.

## CAP EXTEND

**Working Dimensions:**

24 in. L x 24 in. W

**Working Weight:**

5 bs.

Pairs with any 24 in. x 24 in.

CAP for 48 in. tiles

MODEL: CAPEXT



1



2



3

Each CAP model installs easily and lays flat and flush with ceiling grid with the protected opening facing down toward the floor and rollers facing the



Add/remove  
cable without  
removing CAP.  
Ideal for data  
closet usage.

## CAP ACCESS

**Working Dimensions:**

24 in. L x 48 in. W

**Working Weight:**

22 bs.

**Cable Opening:**

4 in. x 8 in.

MODEL: CAP-48



4



5

The CAP looks professional, saves time and money and protects the environment below.

MINTIE

# ECU4 [Environmental Containment Unit]

ENVIRONMENTAL CONTAINMENT UNIT FOR  
ICRA COMPLIANCE LEVELS I-V



## Collapsible Containment or Temporary Isolation Unit with Multi-Functional Accessories.

The ECU4 equipment is industry-leading soft-sided containment unit offering a portable and cost-effective solution that sets up in minutes and collapses to conveniently fit into service vehicles.



### Unit Size

#### ECU4

Manufactured in one convenient size with the ability to add modular components and accessories.

These components and accessories make the ECU4 multi-functional in a wide array of containment projects.



### Multi-Functional

Projects supported include:

Ceiling Containment

Wall Access

Pandemic Response

Threshold Airlock

Corridor Airlock

Temporary Vestibule Egress

Corridor Isolation



### Components Accessories

#### Sidewall Flange

Work in walls and ceilings

#### Corridor Flange

Seal an entire corridor

#### Mobile Platform

Moves ECU4 faster.

#### Air Scrubber

Add negative air pressure.

#### Tow Cart

A caddy for the NAM.



### Disposal Envelope Option

Single-use envelopes for easy clean-up.

Fresh envelope for each use.

## Standard Features of Every ECU4

### Portable

The ECU4 features a collapsible frame that makes it easy to store and transport.

Easily repositioned with the unit deployed and ladder in place.

Add the mobile platform for added portability.



### Convenience

Adjustable negative air machine port and vacuum port



Four windows for visibility.

Clear permit display holder.



Pin locks and Velcro straps for height adjustment.

Two air balancing vents.

### Build Quality

Envelope features a double reinforced nylon floor and a lightweight, rip-stop poly fabric, flame rate to U.S. ASTM E 84.



Larger wheel housing with ball bearing assembly for durable service.



YKK#10 resin zippers.

Sturdy, metal articulating frame setup.

Reinforced stitching on all velcro straps.

### Modular and Scalable

The modular envelope has many accessories to scale to the project.

Multiple configurations for renovation, isolation and surge capacity.

Combine two or more ECU4 units to allow multiple persons to work in one large containment space, create anterooms, corridor containment and airlocks.



## ECU4 Base Model with Accessories



**ECU4 BASE MODEL**



**ECU4 ANTEROOM**



**ECU4 CORRIDOR**

### Doors:

Qty: 2 | Two 22 in. narrow doors  
Two 48 in. cargo doors

### Windows:

Qty: 4 | 14 in. x 40 in.

### Working Dimensions:

48" in. W x 22 in. D  
Extends from 7 ft. to 10 ft. 6 in.

### Collapsed Dimensions

12 in. L x 66 in. W x 12 in. H

### Working Dimensions:

31 in. L x 31 in. W x 61" T

### Working Weight:

62 lbs.

MODEL: MTIECU4

### Add the Sidewall Flange To Make the Anteroom Assembly:

Zipped-in flange on all 4 sides.

### Fit:

Frameless flange adapts to  
doors 30 in. to 58 in. W  
Up to 80 in. H

### Working Dimensions:

51.75 in. W x 24 in. D x 85.5 in. H

### Unique Features:

20" depth suitable for anteroom  
and controlled airlock ingress

### Working Weight:

75 lbs.

MODEL: MTIECU4 +  
MTIECU4-SWF

### Add the Corridor Flange to Make the Corridor Assembly:

Seals off with Velcro tap

### Fit:

Extends to 120 in. H  
x 55" D x 144 in. W

### Dimension Adjustments:

Length: Velcro overlap sections  
Width: Drawstrings  
Height: Velcro overlap sections.

### Unique Features:

Isolates an entire corridor with  
modular components

### Working Weight:

82 lbs.

MODEL: MTIECU4 +  
ECU4-CORFLA

## ECU4 Work Efficiency Accessories



### MOBILE PLATFORM

Four (4), non-marring casters with brakes mounted to the platform provide mobility for the ECU4.

Extends the height of ECU4 unit to reach 11 ft.

PART #: ECUMP4



### TOW CART

Attaches to the Mobile Platform and allows the external Nitro negative air machine to be towed with the ECU4.

PART #: ECUMPTC



### NITRO NEGATIVE AIR MACHINE

Ports to either side of the ECU4 and provides the necessary negative air pressure for dust containment and infection control.

PART #: OA600NHAZ-001



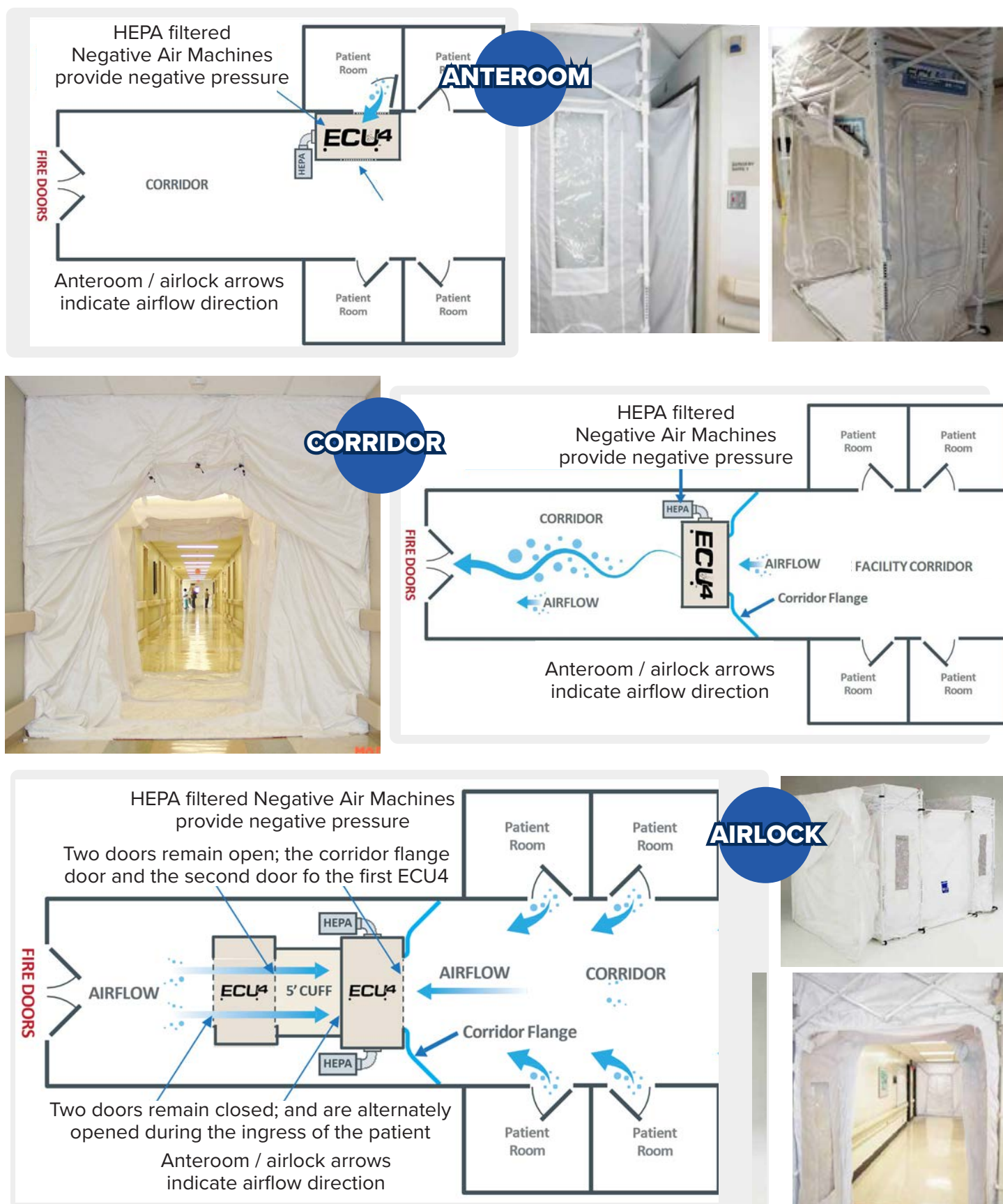
### 5-FT CUFF FLANGE

Add the 5 ft. flange between two ECU4s to create an airlock.

Zips into place on both ECU4s.

PART #: ECU-MODCUF

# Response to Surge Capacity Temporary Isolation



## ECU4 Consumables and Replacements



### DISPOSABLE ENVELOPES - 4 PACK

Dispose of the enclosure  
after each use for easy clean up.

PART #: DE4CC4



### REPLACEMENT FRAME OR ENVELOPE

Both the frame and envelope for the ECU4  
can be replaced independently.

PART #: MTIECU4-FRC (Frame)  
MTIECU4-ENV (Envelope)

## ECU4 Models and Parts Guide



### ECU4

MODEL #	CONFIGURATION
MTIECU4	ECU4 Modular Assembly
MTIECU4-SWF	Sidewall Flange Accessory
ECU4-CORFLA	Corridor Flange Accessory
ECU4-MODCUF	Modular 5 ft. Cuff Assembly
MTIECU4-MAS	AnteRoom Assembly = ECU4 + Sidewall Flange Accessory
MTIECU4-MPP	ECU4 + Sidewall Flange + Mobile Platform + Tow Cart
MTIECU4-CMCS	ECU4 + Sidewall Flange + Mobile Platform + Tow Cart + Negative Air Machine + Disposal Envelopes (4 pack)



STARC® SYSTEMS WALL BARRIERS

# Customizable Temporary Wall Systems

**S T A R C**®

## Award-winning Reusable Containment for ANY Challenge.

### Four Temporary Wall Types

#### REALWALL™

Trusted by leading facilities, our original award-winning system is ideal for long-term installations where noise blocking is needed.

#### LITEBARRIER™

The most durable lightweight containment on the market, LiteBarrier is the perfect solution for multi-phase projects requiring frequent reconfiguration.

#### FIREBLOCK™

The only reusable one-hour fire-rated containment solution available, FireblockWall is superior to traditional fire-rated containment options.




#### STACKBARRIER™

The tallest and most versatile construction barrier available. Start projects faster and raise safety standards with our newest product offering.



#### RealWall™




Less noise.  
More stable.

-  Real wall appearance & stability
-  Reduces noise up to 50%
-  Unmatched durability



#### FireblockWall™

Stops fire.  
Saves time.

-  One-hour fire-rated assembly
-  Up to 4X faster to install
-  Superior noise blocking



#### LiteBarrier™




Lighterweight.  
Extra durable.

-  Light weight
-  Very Durable
-  Lower up-front costs



#### StackBarrier™

More height.  
More versatility.

-  Tall Builds. 8 to 32-feet
-  Versatility
-  ASTM E-84 Certified as Full Assembly

# Standard Features of **S T A R C**®



## RealWall™

- |   |  |   |  |
|---|--|---|--|
| Urethane foam core for noise reduction.               | Lift and drop connection system.                       | 360° T-Slot attachment option for brackets, anchors and braces. | Lift and drop connection system.   |
| Lightweight aluminum front and galvanized steel back. | Ceiling grid attachment options for all ceiling grids. | Concealed height locks.   | Top gasket provides airtight seal.<br>Dual bottom gaskets provide superior floor grip. |



## LiteBarrier™

- |   |  |   |  |
|---|--|---|--|
| Fiberglass reinforced polymer panel with aluminum frames. | Lift and drop connection system.                       | 360° T-Slot attachment option for brackets, anchors and braces. | Lift and drop connection system.   |
| Lightweight panels range from 18 to 40 lbs.               | Ceiling grid attachment options for all ceiling grids. | Concealed height locks.   | Top gasket provides airtight seal.<br>Dual bottom gaskets provide superior floor grip. |



## FireblockWall™

- |   |  |   |  |
|---|--|---|--|
| Fiberglass reinforced polymer panel with aluminum frames. | Lift and drop connection system.                       | 360° T-Slot attachment option for brackets, anchors and braces. | Lift and drop connection system.   |
| Lightweight panels range from 18 to 40 lbs.               | Ceiling grid attachment options for all ceiling grids. | Concealed height locks.   | Top gasket provides airtight seal.<br>Dual bottom gaskets provide superior floor grip. |



## StackBarrier™

- |   |  |   |                                    |
|---|--|---|------------------------------------|
| Fiberglass reinforced polymer panel with aluminum frames. | Lift and drop connection system.                       | 360° T-Slot attachment option for brackets, anchors and braces. | Lift and drop connection system.   |
| Lightweight panels range from 18 to 40 lbs.               | Ceiling grid attachment options for all ceiling grids. | Concealed height locks.   | Top gasket provides airtight seal. |

# STAR C<sup>®</sup>

## Dimensions and Specifications

### RealWall™

**Height:**

Extends from  
6 ft. 10 in. to 10 ft. 3 in.

**Width:**

Panels Available

12"	18"	24"
32"	42"	

**Doors:**

Hinged 42 in. and 54 in.  
Sliding 42" and 54 in.  
Double 80 in.

Fully integrated air  
panels are available.



### LiteBarrier™

**Height:**

Extends from  
6 ft. 10 in. to 10 ft. 3 in.

**Width:**

Panels Available

12"	18"	24"
36"	48"	

**Doors:**

Hinged 42 in. and 54 in.  
Sliding 42" and 54 in.  
Double 80 in.

Fully integrated air  
panels are available.



### FireblockWall™

**Height:**

8 ft. to 10 ft. ceilings.

**Width:**

Panels Available

6"	12"
24"	48"

**Doors:**

Hinged 42 in. and 54 in.  
Sliding 42" and 54 in.  
Double 80 in.

Fully integrated air  
panels are available.



### StackBarrier™

**Height:**

8 ft. to 32 ft. ceilings.

**Dimensions:**

4 ft. W x 4 ft. H
4 ft. W x 8 ft. H

**Doors:**

Hinged 42 in. and 54 in.  
Sliding 42" and 54 in.  
Double 80 in.

Fully integrated air  
panels are available.



# STAR C Accessories



## FLEXIBLE CORNER

Forms inside and outside corners ranging from 15° to 90°



## WALL INTERFACE

Closes the gap between the panel's edge and the existing wall.



## FILLER PANEL

Filler panels can be customized to fit around wall irregularities.



## MOBILITY CARTS

Convenient transportation and storage of panels.



## ASSORTED GRID CLIPS

Attaches the wall to a variety of dropdown ceiling styles.



## LITEBARRIER ADAPTERS

Connects LiteBarrier to RealWall or other polycarbonate systems.



## T-INTERSECTION

Allows for multiple panels to connect to each other.



## FLOOR BRACE

Used for support when no ceiling attachment is available.



## CEILING BRACE

Used for additional support in taller ceiling applications.

**STARC®**
**Available Thru**


## Award-winning reusable containment for ANY challenge

### WHAT TO EXPECT FROM ALL FOUR SOLUTIONS:



**Fast Installation**  
Installs faster than drywall and other competitors' products.



**Reusable & Waste Reducing**  
Reused and reconfigured on hundreds of jobs for years, reducing



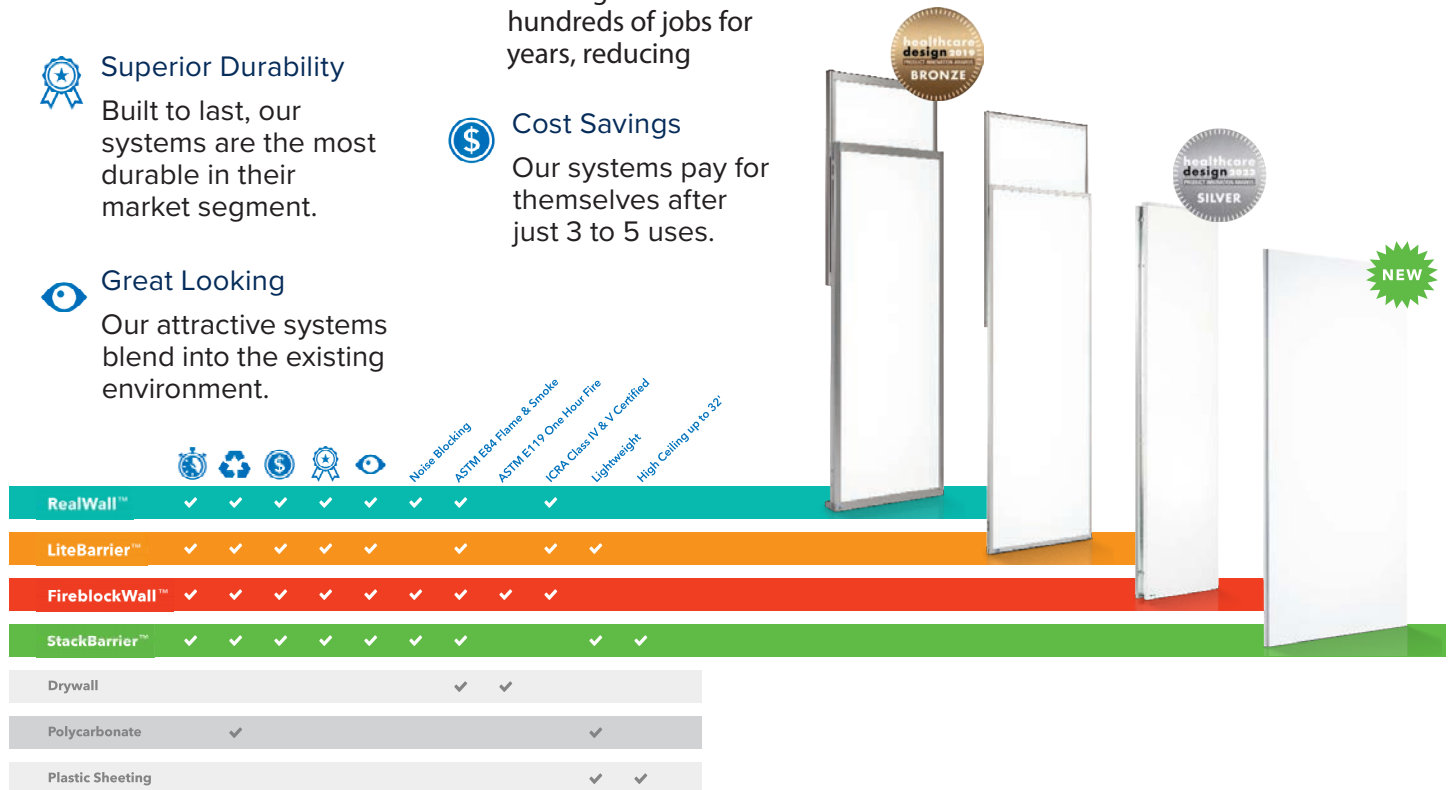
**Superior Durability**  
Built to last, our systems are the most durable in their market segment.



**Cost Savings**  
Our systems pay for themselves after just 3 to 5 uses.



**Great Looking**  
Our attractive systems blend into the existing environment.



### Raising the Standards

STARC® Systems has built a reputation for raising the standard where other containment options fall short. We're faster, safer, greener and offer unmatched durability that improves project margins. With STARC, owners and occupants will appreciate a "better experience" around your build.

You can expect clean finished temporary walls that contain dusty messes, block renovation noise, and improve safety and security. We have something to solve any containment challenge in the field, including tall ceilings, and one-hour fire-rated walls. STARC truly is "Undisrupting Renovation."

## DOWNLOAD THE ENTIRE STARC CATALOG HERE

[WWW.HEPACART.COM/STARC](http://WWW.HEPACART.COM/STARC)

**S T A R C®**

**Photo Gallery**



STARC® SYSTEMS WALL BARRIERS

# Clean & Repair Program



## Ensure the Best Performance of Your Equipment

STARC® Systems Wall Barriers are customizable, easy-to-use, and an environmentally friendly solutions to dust containment, infection control, and noise issues — but only meet air quality standards when they are clean and completely up-to-date.

**HEPACART® is a STARC® Certified Repair Specialist** so we are able to offer a comprehensive clean and repair program to give you peace of mind that your products are up-to-date, checked, and performing their best every time.



## How it Works

HEPACART® has made this process easy to manage and plan for to ensure your products remain state-of-the-art with minimal downtime between projects.



### Ship or Bring Your Equipment to Us

Once you have set up a repair plan with our specialists. You can simply drop off your equipment or ship it to us.



### Checks Are Performed on Your Equipment

We will check your equipment and make sure it is up-to-date, clean, and performing at the highest rate.



### Equipment Arrives Ready to Work

With regular check-ups on your equipment, you can ensure each project is as efficient as possible.

## Your Products Meeting the Mark Every Time

As a business that is known for high-performance and quick turnaround time, it is important to keep that reputation clean through all things that are in your control. Protecting the people that are being affected by the project should be a top priority.



**Meet Indoor Air  
Quality Standards**



**Ensure a Longer  
Lifespan for Your  
Products**



**Experience a  
Hassle-free  
Shipping Process**



**Minimize Downtime  
Between Projects**



GET STARTED

## Keep Every Project Efficient and High Performing

Set every project up for success by getting your wall barriers set up within the Clean & Repair Program.

[WWW.HEPACART.COM/STARC-CLEAN](http://WWW.HEPACART.COM/STARC-CLEAN)

# HEPACART® Training

ONLINE TRAINING AND  
KNOWLEDGE BASE

## Web-Based Training

As a HEPACART® customer, you will receive lifetime FREE training on our mobile containment carts via the interactive HEPACART® Training Video, which covers the correct way to utilize the equipment, various safety recommendations, and best practices. The video is designed to ensure thorough understanding of how to safely and efficiently operate the carts.



At the end of the training, there is a short quiz to assess knowledge. Upon passing the quiz, all participants receive a Certificate noting the completion of the HEPACART® Training. This certification serves as proof of competency in using the equipment.

This training can be completed by all of HEPACART® users and can be taken once or on an annual basis to keep your team sharp and up to date with any new procedures or updates to safety protocols. It ensures that your team remains well-prepared and compliant with best practices.

## Mobile Enabled Knowledge Base

### Accessing HEPACART® Product Resources via QR Code

Many HEPACART® products, including the flagship mobile HEPACART® and the AnteRoom, are equipped with a QR code that allows users to easily access a comprehensive Knowledge Base. The QR code is your gateway to a wealth of information related to your HEPACART® product. YOU can quickly access the following resources:



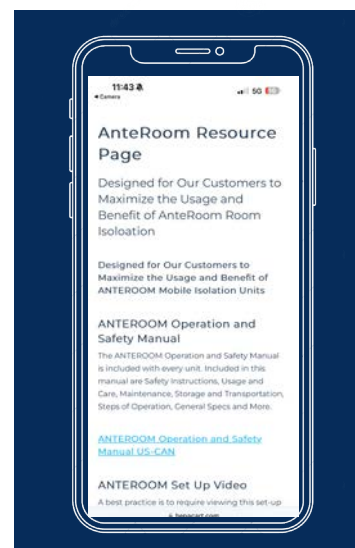
### Product Demonstrations:

Step-by-step guidance on setup, operation, and best practices.

**User Manuals:** Provides essential details about operation and safety protocols.

### Replacement Parts:

Includes a comprehensive list of compatible components. It also provides instructions on how to order these parts and ensures that you can maintain the optimal performance of your product.



# HEPACART® Roadshow

NATIONAL AND REGIONAL TRADE SHOWS,  
TRAINING PARTNERSHIPS



## Exhibits and Conferences

HEPACART® actively participates in key industry conferences each year, including the ASHE PDC and ASHE Annual Conference, as well as numerous regional ASHE events.

We are also a frequent exhibitor at other industry-leading shows such as APIC (Association for Professionals in Infection Control and Epidemiology), the Grainger Show, BICSI, NECA, and various regional gatherings such as TAHFM (Texas), CSHE (California), and FHEA (Florida).



These platforms allow us to connect with professionals across the healthcare, construction, and infection control industries, ensuring they are equipped with the best containment and filtration solutions available.

## Partnerships and Training Programs

In addition to showcasing our products at these events, HEPACART® partners with a range of educational and training organizations to extend our impact beyond conferences.

We collaborate with the United Brotherhood of Carpenters and Joiners of America (UBC) and the Carpenters International Training Center to provide comprehensive resources focused on



ICRA 2.0 protocols. These partnerships enable us to offer specialized training programs that teach healthcare facility staff, construction teams, and infection prevention personnel the proper use, safety procedures, and benefits of containment and negative air equipment in compliance with infection control regulations.

We also partner with various ICRA-specific training organizations across the country, contributing to curriculum development and offering both in-person and web-based demonstrations of HEPACART® solutions. These programs help facilities and contractors stay up-to-date with the latest containment standards, ensuring they can manage infection control risks effectively during construction and maintenance projects.



# HEPACART® Roadshow

SITE VISITS AND WEB  
DEMONSTRATIONS

## Site Visits and Lunch and Learns

Each year, HEPACART® tours the country, engaging with facility managers, contractors, and healthcare professionals. We offer hands-on demos, training, and educational sessions on our innovative products, helping professionals understand their real-world applications.



Our experts present on critical topics like the “Art” of Containment, essential for a safe healthcare environment. We also cover the latest Infection Control Risk Assessment (ICRA) protocols, which influence mobile and temporary containment solutions, vital for patient, staff, and visitor safety.

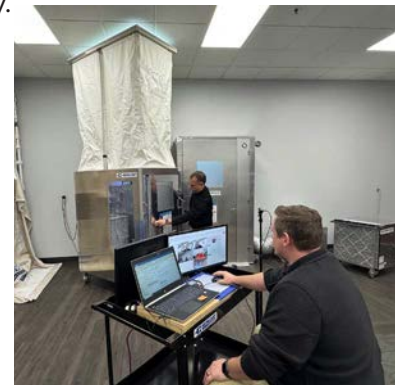


HEPACART® is committed to shaping healthcare containment solutions by staying current with safety standards. Our presentations reach diverse audiences, including ASHE chapters, healthcare systems, and contractors. Through collaboration, we help ensure compliance and safety.

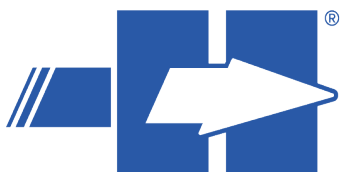
## Live Web Demos

For those who are unable to attend conferences, HEPACART® is pleased to offer personalized, on-site visits and comprehensive web demonstrations designed to meet the specific needs of your healthcare facility, organization, or project. Whether you’re a healthcare system striving to improve infection control protocols during construction or a contractor seeking reliable mobile containment solutions, our experienced team is here to help. We offer tailored, in-depth product demonstrations, hands-on technical support, and valuable staff training to ensure you are equipped with the knowledge and tools needed for optimal performance and safety.

Our services are flexible and can be customized to address the unique challenges of your organization, ensuring that all questions are answered, and all concerns are addressed. Whether you prefer a face-to-face meeting or a convenient virtual demonstration, we are committed to providing you with the best possible service and guidance.



If you would like to schedule a personalized visit to your facility or arrange a virtual demonstration at your convenience, please feel free to reach out to us. Send your inquiries to: [info@hepacart.com](mailto:info@hepacart.com), and one of our team members will promptly assist you in setting up a demonstration that suits your schedule.



# HEPACART®

FILTRATION

|

CONTAINMENT

|

DISINFECTION



