

# HEPACART

MODEL#: HC55U18A

## Mobile Containment with HEPA-Filtration Auto Lift ICRA Compliance LEVEL I-IV | Crew Capacity 1 + Tools, & Ladder

# 55

### Specifications:

#### Working dimensions:

- Interior: 29"W x 55"L x 76.5" T.
- Exterior: 29"W x 60" L x 76.5" T.
- Extended: Reaches up to 10'6" with standard enclosure and up to 14' with additional options. Fits thru any 3.0 door.
- Working weight: 390 lbs.

#### Shipping dimensions:

- 32"W x 64"L x 82" H.
- Shipping weight: 450 lbs.

### Structure: **Best in Class!**

- Fully boxed aluminum frame with caster and wheel assembly rated for 900 lbs. each. Total cart rated for 1500+ lbs. **1**
- All four casters are non-marring, self-braking. Swivel lock on one end. **2**

Our first carts sold in 2007 are still used today!

### HEPA-Filtered Negative Air Machine: **Best in Class! / Exclusive!**

- Lab-tested design, individually tested units and with certified testing results and documentation included. Medical grade 99.99+% at .3 microns. MERV 18 plus. Double gasketed. Fan rated at 750 CFM. **3**

### Adjustable Enclosure: **Best in Class!**

- Fabricated using durable, healthcare approved antimicrobial, anti-static, fire-resistant and easy to clean material -- available in white (standard) or translucent (as specified). **4**
- Each enclosure has two pass-thru slips has a clear zipping closed-top. **5**

### Push Button Automated Raise/Lower Mechanism:

- Two actuators with stationary, protected motors and simple maintenance and replacement.
- Each actuator rated for 200 lbs.
- Set-up allows for angle adjustments up to 45° **6**
- Raises up to 10' 6".

### Exclusive! Safety Features:

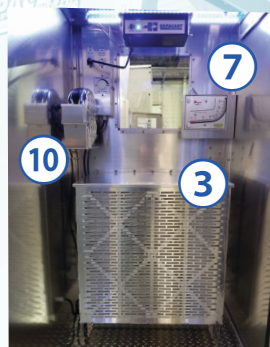
- Pressure indicator (manometer) **7**
- Walk-off mat storage compartment below the door. **8**
- Lock and key set **9**
- Two windows
- Work order/permit slip holder.

### Electrical: **Best in Class!**

- Three-way electrical wired for 120 v. allows power to be safely controlled inside and outside the cart for best IC practices. **10**
- Includes 25 ft. retractable extension cord, convenience outlets and lighting.
- Interior Lighting:

### **Best in Class!**

- LED lighting package includes the HALO lighting in the enclosure which lights the work area including the space above ceiling. **11**
- Also included LED shelf light and LED in-use light.



Lenexa, Kansas

913.789.9590

info@hepacart.com



# HEPACART

www.hepacart.com



# HEPACART<sup>55</sup> Auto Lift

MODEL#: HC55U18A

## Additional Upgrades and Options

### Exclusive!

#### Lithium Battery Kit Disinfection

Provides power for HEPACART® or DUSTBUGGY® for up to seven hours.

Includes fast charger (charges in 4.5 hours and detachable shelf.



#### Adjustable Ladder Extension Module

Extends to allow longer single section and extension ladders (up to 16 ft.)

Folds into place between moves.

Removable.



### Exclusive!

#### TOTAL Wall Access Panel and Enclosure

Sliding door to provide comfortable wall access between 12" and 60".

Foam gaskets protect the flange and walls.

Window in enclosure folds down to access walls above 72".



Upper Wall Window Folds Down.



Open Wall Access Door w/ Foam Protected Flange.

### Exclusive!

#### Multiple Tile Adapter

Expand up to 3x the workable space above the ceiling while maintaining a minimal footprint on the floor.

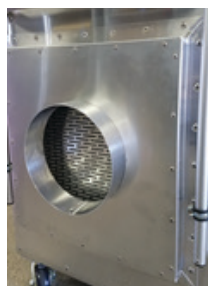
Ideal for projects that require more than one adjacent tile open at any given time.



### Recommended for High Risk Areas

#### Import/Export Adaptor

Attach your external negative air machine or pipe air to a remote area.



#### Vision 360° Panels

Two large polycarbonate windows when visibility is the paramount concern.



#### Enclosure Vision Panels

Two large side windows in the enclosure providing maximum visibility and light in the contained space.



### Exclusive!

#### Lockable Top Job Box Converter

Converts your mobile containment into a portable and secure job-box.



#### Digital Pressure Monitor

Designed for critical applications requiring monitoring and alarming.



#### Ladders

6 ft., 8 ft. and 10 ft. Green Bull single section shelf ladders. 3 section Werner extension ladders.

Others sourced upon request.



#### HEPA-Vacuum Canister:

Quiet, powerful capable of 100 CFM. HEPA-tested to 99.99% at .3 microns. Includes accessories.



#### Dust Covers

Keeps the cart free from dust and debris when in storage and transportation.

Available in top cover or full body dust cover.



Shop for replacement filters and other consumables at [shop.hepacart.com](http://shop.hepacart.com)

## HEPACART® | What We Do

The HEPACART® mission is to develop productive, durable, job-flexible, safe and sustainable infection control solutions that protect patients from dust and pathogens in critical, high-risk environments.

Our secondary mission is to assist healthcare contractors and facilities managers with infection prevention measures that can save time and money.

## HEPACART® | Applications

HEPACARTS® have been used in all types of applications for dust containment and infection control including: cable/wire/conduit installations, plumbing projects, hvac installation and repair, firestopping work, seismic inspections, ceiling tile

replacements, light replacements, terminating outlets/controls/switches, horn and strobe installation, sign repair, regulated ceiling access and many more.

## HEPACART® | Deployed In

The HEPACART® line of infection control products is in over 3,500 healthcare facilities in the U.S. and in bioscience, data centers, semi-conductor/high-tech manufacturing, food safety, hospitality/casino and pharmaceutical drug assembly.

The first HEPACART® units sold in 2007 are still being used today.



### SAFETY

HEPACART® certifies each filtration unit specifically for HEPA air quality and air flow to ensure superior safety.



### DURABILITY

With rugged aluminum construction, our products will provide you a virtual lifetime of use.



### SUSTAINABILITY

Using HEPACART® products reduces waste associated with disposable tents and other temporary enclosures.



### PRODUCTIVITY

HEPACART® products are designed for portability, efficiency, and effectiveness in many environments.



### FLEXIBILITY

Over 50+ retrofit options make HEPACART® a dynamic product that can evolve from one project to the next.



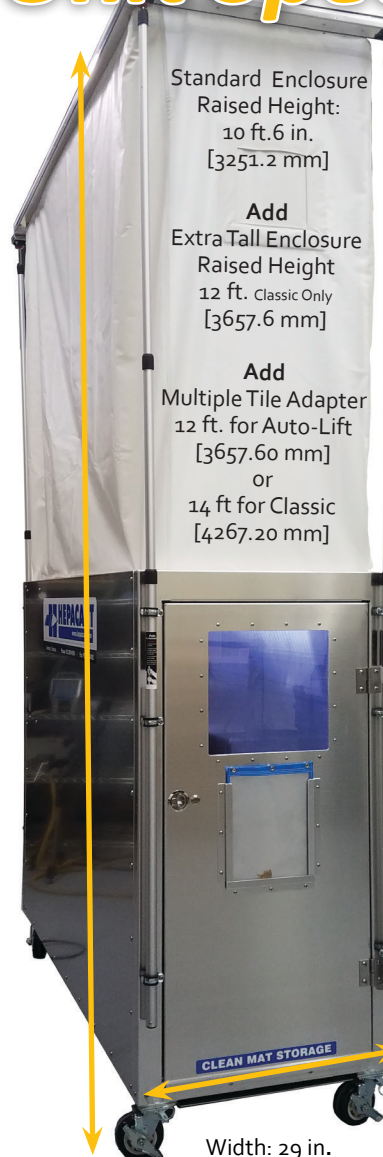
### AESTHETICS

HEPACART® products mean you are serious about infection and dust control.

# HEPACART® Auto Lift 55

## Unit Specifications

MODEL#: HC55U18A



Standard Enclosure  
Raised Height:  
10 ft. 6 in.  
[3251.2 mm]

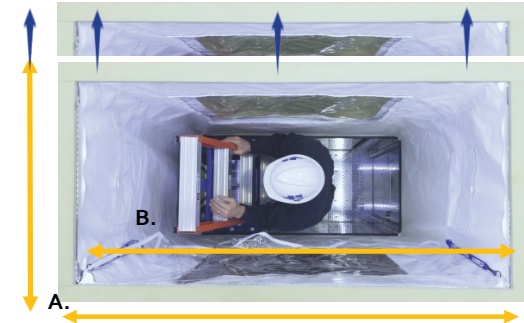
Add  
Extra Tall Enclosure  
Raised Height  
12 ft. Classic Only  
[3657.6 mm]

Add  
Multiple Tile Adapter  
12 ft. for Auto-Lift  
[3657.60 mm]  
or  
14 ft for Classic  
[4267.20 mm]

Width: 29 in.  
[736.6 mm]

to fit thru any 3.0 door.

## Above Ceiling Work Area



A. Top frame external dimensions: 55in L x 29 in. W

B. Top frame internal dimensions: 50 in. L x 24 in. W

Encloses one 2 ft. x 4 ft. tile or two 2 ft. x 2 ft. tiles.

Add the multiple tile adapter to access up to two 2 ft. x 4 ft. tiles

## Electrical Specifications

All electrical components UL listed.

North American models: 120 volt / 60 Hz—12 amps

International models: 220 volt / 50 Hz—10 amps CE

## Filtration Specifications

Lab-tested filtration system with medical grade HEPA 99.99%+ at .3 microns and pleated MERV 10 pre-filter.

Every HEPACART® receives HEPA filter integrity tests (IEST-RP-CC0034.2) as well as particulate tests for ISO 14644 Class V air. Testing and certification paperwork is included in each purchase. Annual testing at minimum strongly advised.

Standard fan rating: 750 cfm | exhausting 500 cfm

HEPA-Filter 24 in. x 24 in. x 6 in.

MERV 10 Pre-Filter: 24 in. x 24 in. x 1 in.

## Recommended Ladders

6 ft. and 8 ft. shelf ladders.

6 ft. A-frame ladder

Taller extension ladders with the Adjustable Ladder Extension Module.



INFECTION CONTROL TECHNOLOGIES



## #1. LAB-TESTED DESIGN:

The HEPACART® designed system has been tested by third-party labs including LMS Technologies with impressive results.

## #2. SMOKE-TESTED:

The HEPACART® filtration system design has been smoke-tested to make sure the air is being contained and filtered. The design of air-flow is critical to containment.

## #3. FILTER SCAN TESTED:

The HEPA-filters are first scan-tested at the factory and come with a 99.99% certification — even more efficient than the standard HEPA classification.

## #4. EACH UNIT TESTED:

Every HEPACART® is tested as an assembled unit towith an ATI Photometer, a EBT Balometer and an EBT Micromanometer with an ATI Generator and a Lighthouse Particle Counter to confirm proper filter installation and integrity.

## #5. TESTING EQUIPMENT CALIBRATED YEARLY:

All testing equipment is recertified on an annual basis.

When all testing is completed and the unit is satisfactory, then each the HEPACART® is given a Certification of Compliance. A report of all testing results are provide to your company for record keeping and compliance.

The electrical system and sound generation are also tested for each HEPACART®

Re-test the equipment on an annual basis at minimum or whenever it is suspected the HEPA-filtration system has been compromised or damaged.

If your company needs help with locating an air-quality testing company for re-certification, contact us and we can help locate a company in your area.



Lenexa, Kansas




# 5 STEPS TO AIR QUALITY PEACE OF MIND

Independent lab testing conducted by **LMS Technologies, Inc.** — Bloomington, MN USA

Test Type: Single-pass HEPACART : Al Vatine, President | John Cherne, Microbiologist



## LMSTECHNOLOGIES

Tests	Start cfu/ml	ml	Upstream cfu	Upstream / 500 cfu/cfm	Downstream / 500 cfu/cfm	Up/Down x100
 <b>Staph aureus Average</b>	9.00E+08	0.98	8.80E+08	1.80E+06	47	99.997%
 <b>MS-2 Average</b>	1.00E+11	1.82	1.80E+11	3.60E+08	210	99.9999%
 <b>Aspergillus Average</b>	3.00E+07	0.45	1.40E+07	2.70E+04	1	99.996%

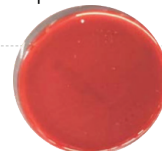
Scope: Perform a viability test on Hepacart model DAHC55U-H with 3 organisms: Staph aureus ATCC 6538, Aspergillus Niger ATCC 1004, and MS-2 Phage ATCC 15597-B1. Calculate collection efficiency. Method: Testing was performed in a custom manufactured HEPA filtration device. Organisms were grown on appropriate media, harvested and resuspended in saline to 1.0 x 10<sup>6</sup>.

Suspensions of organisms were then aerosolized into the Hepacart using a nebulizer for 5 min. Downstream air was sampled using a SKC biostage impactor calibrated to draw 28 liters/min. The recovered organisms were enumerated after 1-2 days incubation. Testing for each organism was done in triplicate. The filtration efficiency was calculated by formula:

Efficiency = (Upstream-downstream)/Upstream x 100.

Based on this battery of tests, you can be confident that every HEPACART® from the factory is ready to clean the air to the highest ICRA level with 99.99% efficiency or grateer at .3 microns and a MERV rating that exceeds 18. The filter integrity tests (IEST-RP-CC0034.2) and particulate tests confirm ISO 14644 compliant Class 5 air.

Staph aureus



HEPA on downstream

MS-2



HEPA on downstream

Aspergillus



HEPA on downstream



913.789.9590

info@hepacart.com