



Also available with clear  
Vision side panel

Lenexa, Kansas

### Structure: Best in Class!

- Fully boxed aluminum frame
- Lightweight, unibody design
- Assembled with aircraft-grade inserts and truss-head screws
- Each non-marring caster has a lock and is rated for 900 lbs
- Total cart rated for 1500 lbs
- Swivel locks on one end



### Enclosure: Best in Class!

- Healthcare approved, durable and easy to clean
- Last 5x longer than woven enclosures
- Available in white or translucent
- Antimicrobial, non-woven, anti-static and fire-resistant
- Two pass-thru slips for passing cable, conduit or tools
- Clear zipping top contains dust between moves
- Quick installation for change-out or replacement



### Interior Lighting: Best in Class!

- Dimmable HALO LED lighting system illuminates work area
- LED shelf illuminates lower enclosure



### Filtration: Best in Class!

- Lab-tested design
- HEPA 99.99+% at 0.3  $\mu\text{m}$
- Individually tested AND certified with testing results
- MERV 8 Pleated Pre-filter
- 99.99% HEPA exceeds ASHRAE 52.2 MERV 16 Rating
- Fan rated at 750 CFM
- Airflow: 500+ CFM at exhaust
- Variable speed control allows for precise airflow control to meet the needs of your job
- HEPA filter mounted after fan for best in class particle reduction



### Advanced Safety Features

- Red IN USE light
- Differential pressure gauge / manometer
- Walk-off mat storage tacky mat compartment



### Premium Door Package

- Large window
- Lock and key set
- Work permit slip holder



### Electrical: Best in Class!

- Negative air machine conforms to UL Standard 507 and Certified to CSA STD 22.2 No. 113
- GFCI protected outlets located inside the unit for convenience
- 25 ft. retractable cord
- Three-way electrical switch wired for 120 vac for US
- Enhanced infection-prevention capability with both external & internal on/off switches for negative air machine



913.789.9590

info@hepacart.com



# HEPACART® Classic Mobile Containment System

*Manually Adjusted, Spring-Loaded, Telescoping Poles Offer Maximum Flexibility*

Capacity: 1 Plus Tools  
and Ladder



## 55 CLASSIC

MODEL#:  
HC55C-

Working Dimensions

60" L x 29"W

Raises 10 ft. 6 in.

(Up to 14 ft. with additional  
options)

Working Weight:

350 lbs

Fits through any standard  
36" door.



Capacity: 2 Plus Tools  
and Ladder



## 74 CLASSIC

MODEL#:  
HC74C-

Working Dimensions

80" L x 29"W

Raises 10 ft. 6 in.

(Up to 14 ft. with  
additional options)

Working Weight:

375 lbs

Fits through any  
standard 36" door.



Capacity: 2 Plus Tools and Ladder  
For Large Projects



## 74<sup>x</sup> CLASSIC

MODEL#:  
HC74X18C-

Working Dimensions

80" L x 39"W

Raises 10 ft. 6 in.

(Up to 14 ft. with  
additional options)

Working Weight:

400 lbs

Fits through any  
standard 42" door.



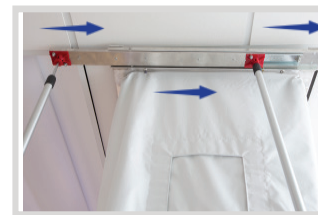
## HEPACART® CLASSIC FEATURES

### Most Versatile Raise/Lower System

- Telescoping, spring-loaded extension for tight seal
- Ready to move in seconds
- Raises up to 10' 6" height
- Individual articulation at all four corners adjusts to nearly any ceiling
- No tools required
- Add optional tall enclosure to reach 12 ft. ceilings
- Add optional Multiple Tile Adapter to Tall Enclosure, to reach 14 ft. ceilings

### Exclusive: Top Slide-out

- Offsets top frame up to 8" at the ceiling
- Ideal for working around wall obstacles like handrails, art, nurse's stations, etc.
- Locks into place







# Auto-Lift Mobile Containment System

Push Button Auto-Lift with Dual Actuators Provides Unparalleled Ease of Use

Capacity: 1 Plus Tools  
and Ladder

## 55 AUTO-LIFT

MODEL#:  
HC55A-

Working Dimensions

60" L x 29"W

Extends 10 ft. 6 in.

(Up to 14 ft. with  
additional options)

Working Weight:

350 lbs

Fits through any  
standard 36" door.



Capacity: 2 Plus Tools  
and Ladder

## 74 AUTO-LIFT

MODEL#:  
HC74A-

Working Dimensions

80" L x 29"W

Extends 10 ft. 6 in.

(Up to 14 ft. with  
additional options)

Working Weight:

375 lbs

Fits through any  
standard 36" door.



Capacity: 2 Plus Tools and Ladder  
For Large Projects

## 74<sup>x</sup> AUTO-LIFT

MODEL#:  
HC7X-

Working Dimensions

80" L x 39"W

Extends 10 ft. 6 in.

(Up to 14 ft. with  
additional options)

Working Weight:

400 lbs

Fits through any  
standard 42" door.



## HEPACART® AUTO-LIFT FEATURES

### Exclusive: Easiest Raise /Lower System

- Two internal actuators adjust the enclosure individually to the desired height with the push of a button
- Allows for angle adjustment up to 45° for ceilings and floors
- Easy-to-replace actuators with stationary motors
- Replaces the Classic mechanical operation extension poles
- Each actuator rated for 200 lbs
- No tools required



### Recommended Ladders

- 6 ft, 8 ft, and 10 ft shelf ladders
  - 6 ft A-frame ladder
- Taller extension ladders with the Adjustable Ladder Extension Module
- A-frame ladders fully open in the HEPACART 74 and 74X models or can rest securely on the built-in ladder shelf on all HEPACART models.

### Electrical Specifications

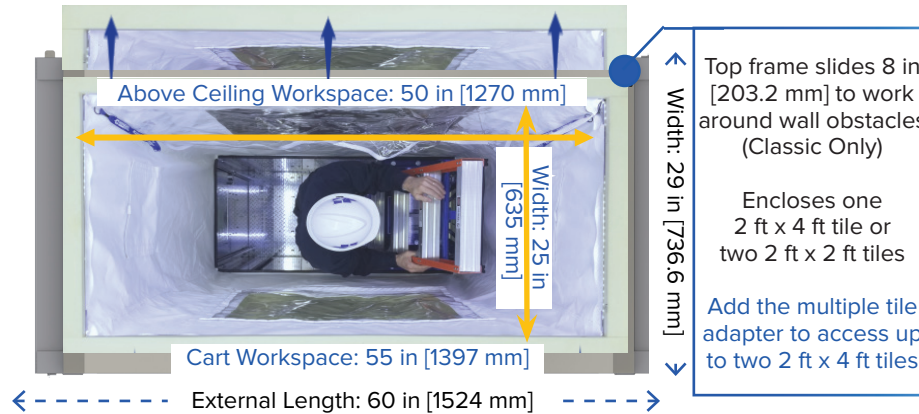
- All electrical components UL listed
  - North American models: 120 volt / 60 Hz—12 amps
  - International models: 230 volt / 50 Hz—8 amps CE

### Filtration Specifications

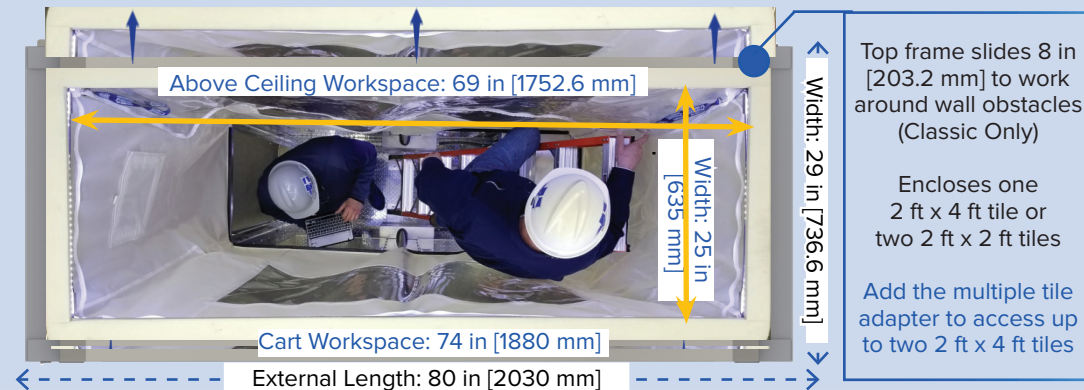
- Lab-tested filtration system with MERV 8 pleated pre-filter and medical grade HEPA 99.99%+ at 0.3 microns
  - Every HEPACART® receives HEPA filter integrity tests (IEST-RP-CC0034.2) and particulate tests for ISO 14644 Class V air.
- Testing and certification paperwork included in each purchase.
- Re-testing recommended annually
- Recertification testing service available from HEPACART

HEPA-Filter: 24 in x 24 in x 6 in  
MERV 8 Pre-Filter: 24 in x 24 in x 1 in

### HEPACART® 55 Classic or Auto-Lift



### HEPACART® 74 Classic or Auto-Lift



### HEPACART® 74X Classic or Auto-Lift



**Add**  
Multiple Tile Adapter to reach 12 ft. for Auto-Lift [3657.60 mm]  
or  
14 ft for Classic [4267.20 mm]

**Add**  
Extra Tall Enclosure to reach 12 ft. Classic Only [3657.6 mm]

Standard Enclosure raised height: 10 ft.6 in. [3251.2 mm]

**Lowered Height:** 76.5 in. [1943.1 mm]





### Reach New Heights

#### ADJUSTABLE EXTENSION MODULE | Ladder Height

- Adjustable extension allows longer single section and extension ladder to be used
- Utilize up to a 16 ft. ladder
- Folds into place for transport between moves
- No tools for operation
- Removeable from unit
- Upgrade or retrofit existing model
- Works with many sizes, types and brands of ladders
- Keeps worker inside the perimeter of the cart



Work up to 16 ft.  
in the ceiling.

PART:  
ALEM

### Add Total Visibility

#### VISION PANELS | Side Windows for Complete Visibility

- Two large side windows in the cart when visibility is the paramount concern
- Available as one window with wall access

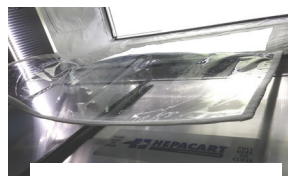


PART:  
Vision Panel Left and Right Side  
Vision Panel Left Side  
Vision Panel Right Side

### Add Wall Access

#### TOTAL WALL ACCESS / Upgrade or Retrofit for CLASSIC

- Cart: Sliding door opens on the side to provide comfortable wall access between 12" and 60" in height
- Enclosure: Removable windows in the enclosure allows access to the wall area above 72"
- Ideal for wall mounted electrical. Includes two windows and two pass-thrus



Interior View: Upper Wall  
Window Folds Down.



Exterior View: Open Wall Access  
Door w/ Foam Protected Flange.



Interior View with  
Single Vision Panel

PART:  
Total Wall Access

### No Outlet - No Problem

#### LITHIUM BATTERY KIT | Includes Fast Charger and Shelf

- Provides power for any HEPACART® product
- Mobile app enabled
- Built in surge-allowances and multi-state protection
- Zero fumes and zero noise
- Back up emergency power



PART # HC-BAT-KIT-GZY1500X

### Access Multiple Tiles

#### MULTIPLE TILE ADAPTER | Expanded Access

- Expand to 2x to 3x the workable space in ceiling
- Fits in the top frame of the unit
- Maintain minimal footprint on the floor
- Reach up to 14 ft. when used with 12 ft. tall enclosure on a CLASSIC model
- Reach up to 12 ft. when used with an AUTO-LIFT model



PART #:  
MTA55HALO2  
MTA74HALO2  
MTA74XHALO2

### Convert Cart to Job Box

#### LOCKABLE TOP\* | Converts CLASSIC HEPACART® or DUSTBUGGY® to Lockable Job Box

- Top swings up from the inside; locks with pins
- Secures items left in the cart

PART:  
Lockable Top

\* not compatible with the Auto Lift or Wall Access options at this time.



# **HEPACART®** *Enclosure Options and Replacements*

## Enclosure Visibility

### ENCLOSURE WINDOWS | Added Visibility

- Two large side windows in the enclosure providing maximum visibility in the contained space
- Available in White or Translucent



PART #:  
WAE157x64  
WAE195x64  
WAE215x64

## High Ceilings (12'+)

### TALL ANTIMICROBIAL PROTECTED ENCLOSURE For All HEPACART® CLASSIC Mobile Containment

- Reaches up to 12 ft.+
- Antimicrobial, flame-resistant, odor-resistant, anti-static, durable, stain-resistant and no fiber shedding

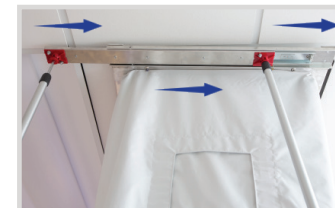


PART #:  
PTC157x88-W18 (White HC55U Series) -12 ft  
PTC195x88-W18 (White HC74U Series) -12 ft  
PTC215x88-W18 (White HC74UX Series) -12 ft

## Expanded Access

### SLIDE-OUT ENCLOSURE TOP FOR CLASSIC HEPACART®

- Allows the top frame of the enclosure to be extended out up to 8"
- Perfect for working around wall mounted obstacles
- Locks into place when not in use
- Included on Classic HC55U18 and HC74U18 Series models. To retrofit existing units use same part number



PART #:  
SOCO

## Installed or Replacement

### TRANSLUCENT OR WHITE ENCLOSURE

- Available in standard height reaching up to 10 ft 6 in or as a tall version reaching up to 12 ft
- Allows light and some visibility inside of the cart.
- Antimicrobial, flame-resistant, odor-resistant, anti-static, durable, stain-resistant and no fiber shedding



REPLACE / RETROFIT PART #:  
PTC157x64-T18 (Translucent HC55U Series)  
PTC157x88-T18 (Translucent HC55U Series) -12 ft  
PTC195x64-T18 (Translucent HC74U Series)  
PTC195x88-T18 (Translucent HC74U Series) -12 ft  
PTC215x64-T18 (White HC74UX Series)  
PTC215x88-T18 (Translucent HC74UX Series) -12 ft

## Standard Replacements

### HEPACART® | DUSTBUGGY™ ANTIMICROBIAL PROTECTED ENCLOSURE FOR REPLACEMENT OR RETROFIT

- Standard 10 ft. 6 in. white enclosure replacement
- Antimicrobial, flame-resistant, odor-resistant, anti-static, durable, stain-resistant and no fiber shedding

REPLACE / RETROFIT PART #:  
PTC157x64-W18 (White HC55U Series)  
PTC195x64-W18 (White HC74U Series)  
PTC215x64-W18 (White HC74UX Series)



## Go Even Higher -14 ft +

### STACKABLE EXTENSION MODULE FOR HEPACART

- Each stackable extension adds 2 ft. to the enclosure height
- Securely fastens to the HEPACART® and to each other
- For Auto-Lifts carts only

PART #:  
SEMHC55U18A (HC55U Series)  
SEMHC74U18A (HC74U Series)  
SEMHC74UX18A (HC74UX Series)





# HEPACART® Options, Upgrades and Consumables

## Monitor Pressure

### DIGITAL PRESSURE MONITOR | Advanced

- Configurable to monitor positive or negative pressure in protected spaces
- Complete system with a graphic user interface

PART #:  
HCRPM



## Keep it Ready



### WALK-OFF MATS

- Measures 18" x 36" / 60 pack
- Fits into the walk-off mat tray under HEPACART® and DUSTBUGGY® models
- Includes non-slip frame and mats

PART#: CM

PART#: CMR (Refill mats only)



## Recommended Ladder

### SHELF LADDERS

- Available in 6 ft., 8 ft. and 10 ft. sizes

PART#:

GBSL201206 (6 ft. ladder)

GBSL201208 (8 ft. ladder)

GBSL201210 (10 ft. ladder)

- Other ladders sourced on request

## NEW! Access Floors

### FLOOR ACCESS OPTION

- Removable floor plate for access below
- Protective gasket to the floor
- 27" x 19" opening
- Adjustable and removable



PART#:  
FA74C

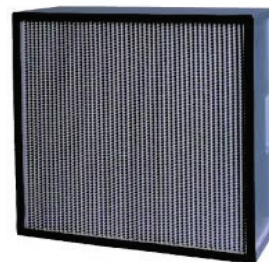
Available on DUSTBUGGY® only

## Replacement Filters

### 99.99% MEDICAL GRADE HEPA-FILTER

- Manufactured by Camfil-Farr
- Double gasketed
- 24" x 24" x 6"
- Lab-testing results were achieved with this HEPA-Filter model

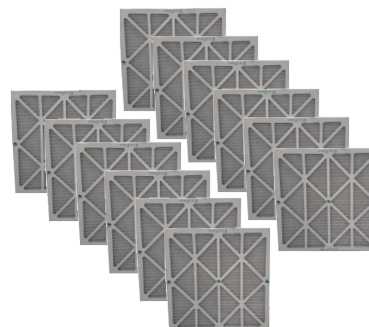
PART#:  
HF24246



### PLEATED PRE-FILTERS

- 24" x 24" x 1"
- MERV 8 high velocity
- Case of 12

PART#:  
PF24241



### HEPA VACUUM FOR CLEANING

- Quiet, powerful 1.25HP motor capable of 67 CFM
- HEPA-tested to meet a minimum efficiency of 99.99% at 0.3 microns

PART#:  
T9FB257029



### CLEAN KIT

- Convenient storage of recommended cleaning supplies
- Includes cleaner and wipes

PART#:  
HCKK



### TOP DUST COVER

- Keeps the cart free from dust while in storage or transport

PART#:

DCHC55 (HC55U Series)

DCHC74 (HC74U Series)

DCHC74UX (HC74UX Series)



### FULL DUST COVER

- Encloses the entire cart keeping it free from dust and scratches while in storage or transport

PART#:

FDC-HC55 (HC55U Series)

FDC-HC74 (HC74U Series)

FDC-HC74X (HC74UX Series)



# Compliance, Air Testing Certifications and Listing Authorities

## Certified Lab Results

Independent lab testing conducted by  
**LMS Technologies, Inc.** — Bloomington, MN USA  
Test Type: Single-pass HEPACART® :  
Al Vatine, President | John Cherne, Microbiologist



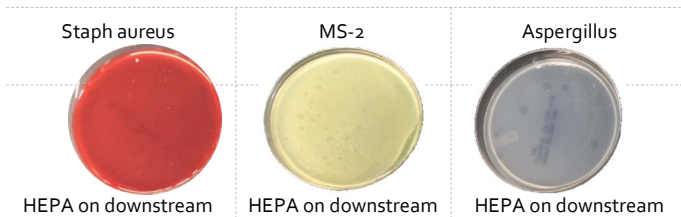
Tests	Up/Down x100
Staph aureus Average	99.997%
MS-2 Average	99.9999%
Aspergillus Average	99.996%

Scope: Perform a viability test on Hepacart® model DAHC55U-H with 3 organisms: Staph aureus ATCC 6538, Aspergillus Niger ATCC 1004, and MS-2 Phage ATCC 15597-B1. Calculate collection efficiency. Method: Testing was performed in a custom manufactured HEPA filtration device. Organisms were grown on appropriate media, harvested and resuspended in saline to 1.0 x 10<sup>6</sup>. Suspensions of organisms were then aerosolized into the Hepacart using a nebulizer for 5 min.

Downstream air was sampled using a SKC biostage impactor calibrated to draw 28 liters/min. The recovered organisms were enumerated after 1-2 days incubation. Testing for each organism was done in triplicate. The filtration efficiency was calculated by formula:

Efficiency = (Upstream-downstream)/Upstream x 100.

Based on this battery of tests, you can be confident that every HEPACART® from the factory is ready to clean the air to the highest ICRA level with 99.99% efficiency or greater at 0.3 microns. The filter integrity tests (IEST-RP-CC0034.2) and particulate tests confirm ISO 14644 compliant Class 5 air.



## 5 Steps to Air Quality Peace of Mind

### #1. LAB-TESTED DESIGN:

The HEPACART® designed system has been tested by third-party labs including LMS Technologies with impressive results.

### #2. SMOKE-TESTED FOR PROPER AIRFLOW:

The HEPACART® filtration system design has been smoke-tested to make sure the air is being contained and filtered. The design of air-flow is critical to containment.

### #3. FILTER SCAN TESTED AT FACTORY:

The HEPA-filters are first scan-tested at the factory and come with a 99.99% certification — even more efficient than the standard HEPA classification.

### #4. EACH UNIT IS INDIVIDUALLY TESTED:

Every HEPACART® is tested as an assembled unit with an ATI Photometer, a EBT Balometer and an EBT Micromanometer with an ATI Generator to confirm proper filter installation and integrity.

### #5. TESTING EQUIPMENT CALIBRATED ANNUALLY:

All testing equipment is recertified on an annual basis.

When testing is completed and the unit is satisfactory, each HEPACART® is given a Certification of Compliance. A report of all testing results are provided to your company for record keeping and compliance.

The electrical system and sound generation are also tested for each HEPACART®

Re-test the equipment on an annual basis at minimum or whenever it is suspected the HEPA-filtration system has been compromised or damaged.

## On-Site Testing and Compliance Services

- Turn-key quoting, scheduling and execution of on-site filter integrity and air-flow testing.
- Recommended annually on all HEPA-filtration mobile units for ICRA compliance.



## Domestic Compliance Listing U.S.A.

- All HEPACART® units
- Testing performed by Intertek
- Conforms to UL Standard 507
- Standard U.S. grounded plug
- 25 ft. cord reel, and GFCI outlets
- 120 vac. / 60 Hz



## International Compliance Listing

### CANADA

- All HEPACART® units
- Testing performed by Intertek
- Certified to CSA STD 22.2 No. 1
- Same specs as US model



### UNITED KINGDOM / EUROPE

- All HEPACART® units
- Testing performed by Intertek
- Conforms to CE and UKCA requirements
- Electrical plugs configured to destination country specs
- Equipped with inlet plug in place of cord reel

### AUSTRALIA / MIDDLE EAST ASIA / SOUTH AMERICA

- All HEPACART® units
- Built to the CE specification
- Electrical plugs configured to destination country

